

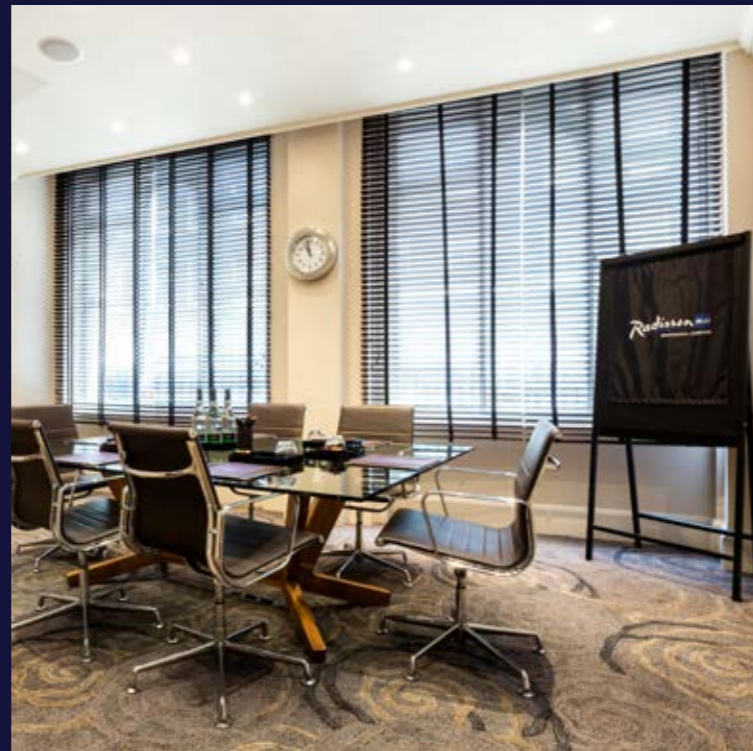


MEETINGS AND EVENTS

WELCOME

CHARACTERFUL AND CULTURED, STAY IN LITERARY BLOOMSBURY IN LONDON'S WEST END.

Warmly inviting and stylish, the Kenilworth offers modern bedrooms alongside luxury furnishings, a popular restaurant and a prime location, moments from the British Museum and Tottenham Court Road tube station.



FOOD FOR THOUGHT

DISCOVER WORLD-CLASS DINING IN AN ICONIC LOCATION

Our food and drink teams are here to ensure you stay energised, motivated and focused, with a range of delicious menus to choose from. We promise to go above and beyond to bring you the very best in innovative and responsible gastronomy.

Specifically designed to improve efficiency and your ability to concentrate, we have a fantastic range of simple, wholesome and tasty offerings. Menus can be tailored to your tastes, and our expert teams - dedicated and discreet, can set the scene to match the mood.

EDWARD FOR MEETINGS

MEET EDWARD:
YOUR DEDICATED
CONFERENCE HOST

Edward is an innovative and unique chatbot, developed specifically to match the needs of the hospitality industry. He responds to guests' requests via SMS text messaging. Edward is available to all residential guests and organisers at the hotel.



CAPACITIES



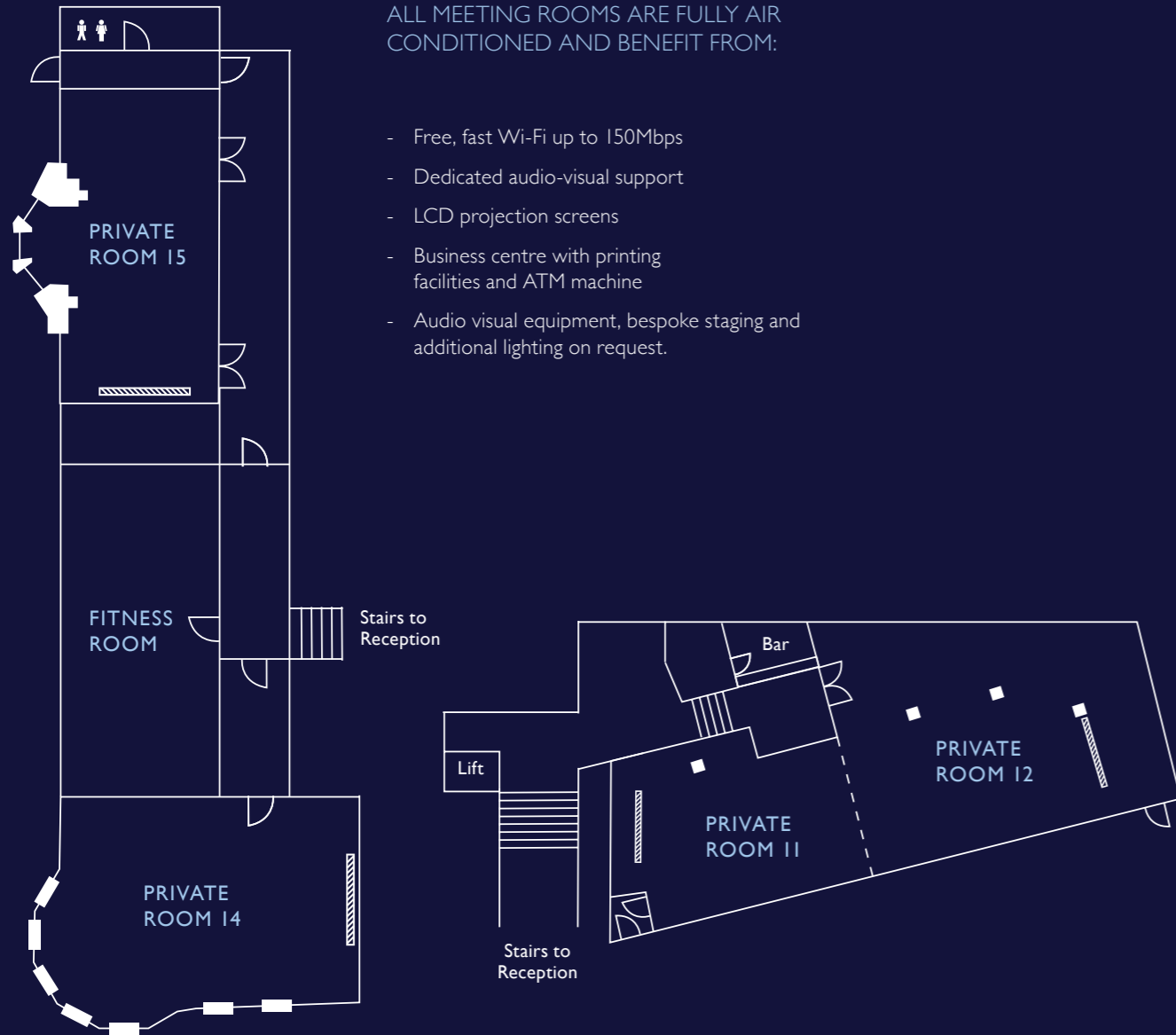
	Theatre	Classroom	Boardroom	U-shape	Cabaret	Reception	Lunch/Dinner	Dinner Dance
Private Room 7	24	15	14	15	14	30	16	–
Private Room 8	–	–	–	6	–	–	8	–
Private Room 9 & 10	80	36	30	30	42	110	70	60
Private Room 9	25	15	12	12	15	30	30	–
Private Room 10	50	20	16	20	24	60	50	–
Private Room 11 & 12	100	50	34	30	54	120	80	90
Private Room 11	25	18	12	14	15	30	30	–
Private Room 12	50	24	20	20	24	80	50	–
Private Room 14	25	12	12	12	12	25	20	–
Private Room 15	25	12	14	14	–	25	20	–

FLOOR DIMENSIONS

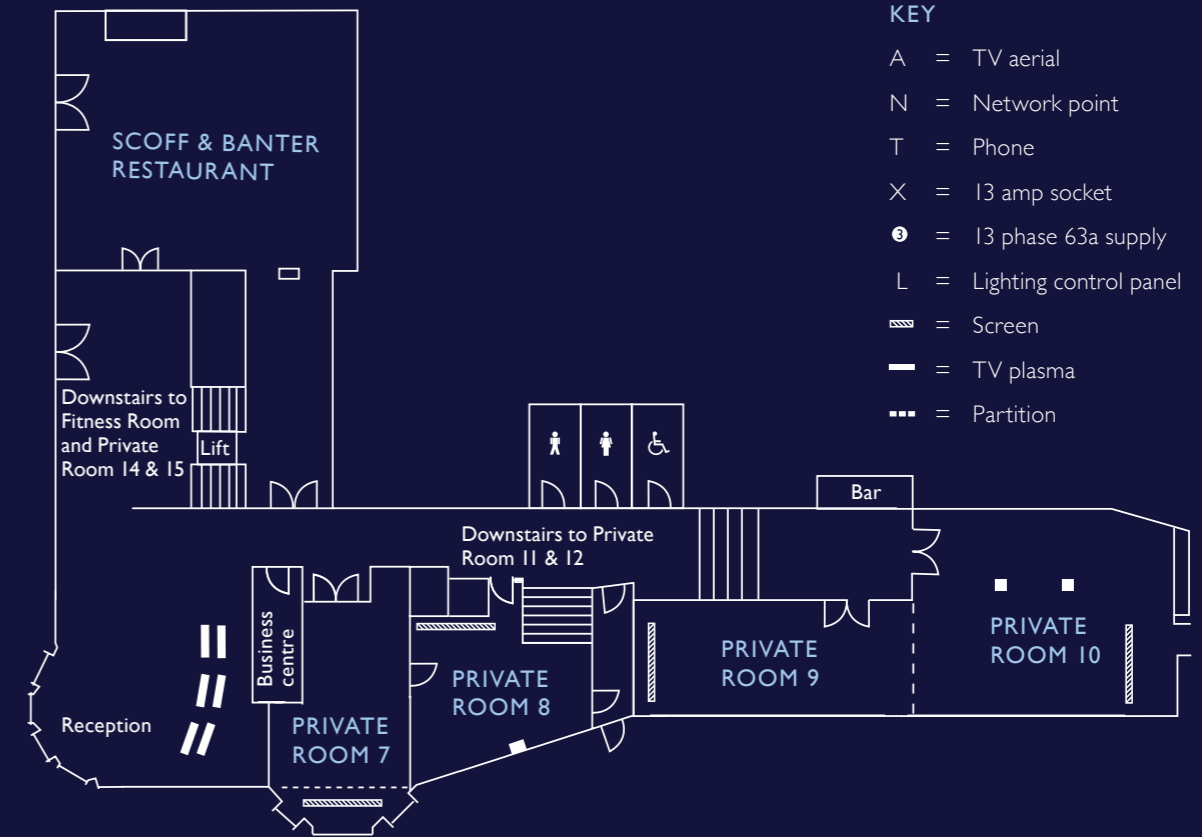
	Area	Length m (ft)	Width m (ft)	Height m (ft)	Floor	Natural daylight
Private Room 7	41 m ² (441 ft ²)	8.2 m (26'90")	5.0 m (16'40")	2.8 m (9'18")		
Private Room 8	29 m ² (313 ft ²)	5.4 m (17'71")	5.4 m (17'70")	2.8 m (9'18")		
Private Room 9 & 10	118.4 m ² (1274 ft ²)	18.8 m (61'66")	6.3 m (20'66")	2.6 m (8'52")		
Private Room 9	39 m ² (421 ft ²)	8.9 m (29'19")	4.4 m (14'43")	2.6 m (8'52")		
Private Room 10	68 m ² (735 ft ²)	9.9 m (32'47")	6.9 m (22'63")	2.6 m (8'52")		
Private Room 11 & 12	138.5 m ² (1477 ft ²)	19.9 m (65'27")	6.9 m (22'63")	2.6 m (8'52")		
Private Room 11	48.4 m ² (451 ft ²)	8.4 m (27'55")	5.0 m (16'40")	2.6 m (8'52")		
Private Room 12	90.1 m ² (779 ft ²)	11.5 m (37'72")	6.3 m (20'66")	2.6 m (8'52")		
Private Room 14	41.2 m ² (430 ft ²)	8 m (26'24")	5 m (16'40")	2.6 m (8'52")		
Private Room 15	37.4 m ² (387 ft ²)	9 m (29'52")	4.0 m (13'12")	2.6 m (8'52")		



LOWER GROUND FLOOR



GROUND FLOOR



LOCATION

KENILWORTH

★★★★

97 Great Russell Street,
London
WC1B 3LB

T +44 (0)20 7637 3477

F +44 (0)20 7631 3133

E reskeni@radisson.com

W [radissonblu-edwardian.com/
kenilworth](http://radissonblu-edwardian.com/kenilworth)

TRAVEL

Car Park

Great Russell Street

Underground

Tottenham Court Road
(Central and Northern Lines)

Crossrail

Tottenham Court Road
(Elizabeth Line)

Trains

Euston (1 mile)

King's Cross St. Pancras

Eurostar (1.7 miles)

Airport

City Airport (9 miles)

Heathrow (18 miles)

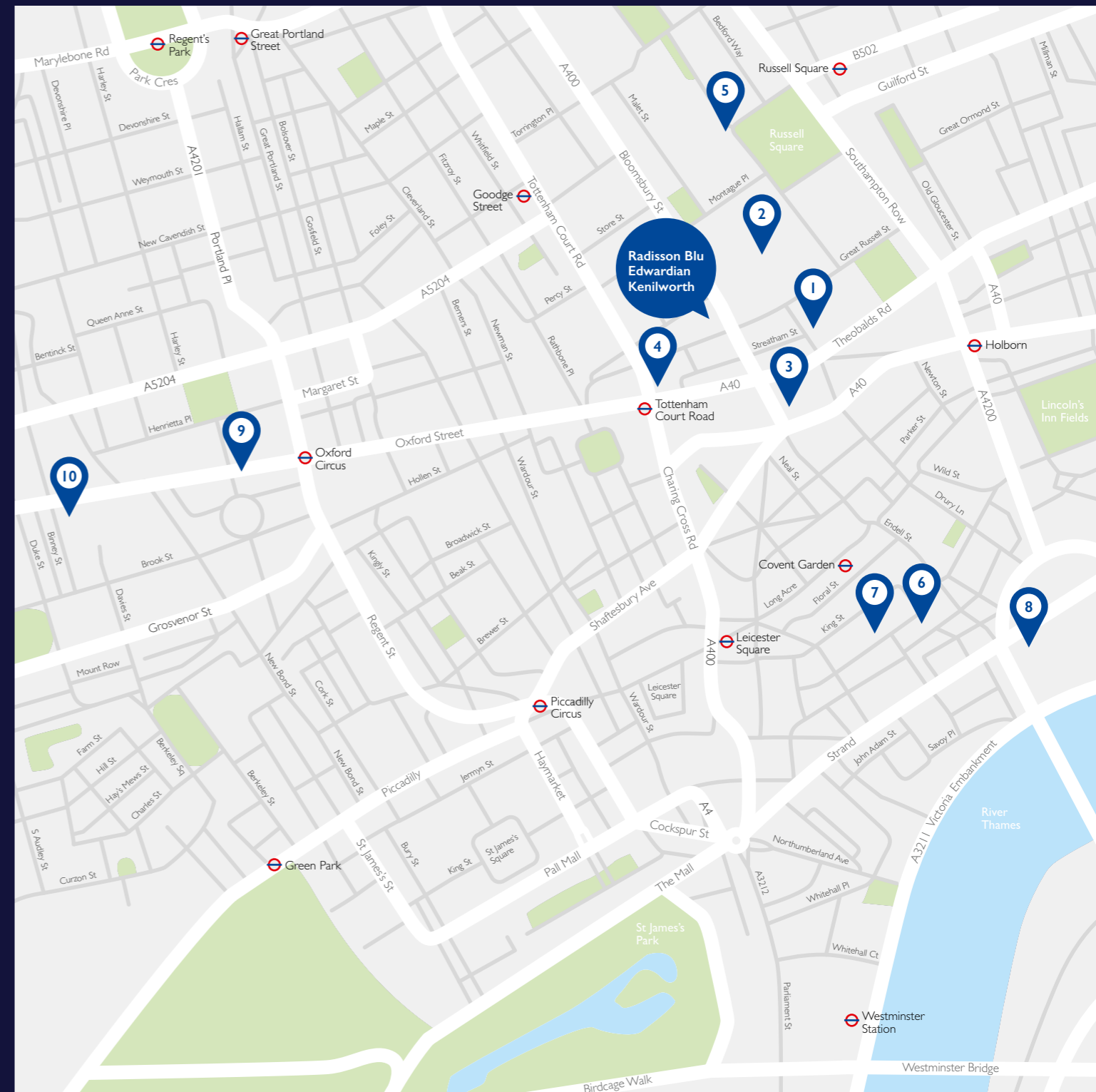
Gatwick (28 miles)

Luton (35 miles)

Stansted (37 miles)

POINTS OF INTEREST

- 1 The Cartoon Museum (1 min walk)
- 2 British Museum (1 min walk)
- 3 The Shaftesbury Theatre (1 min walk)
- 4 Dominion Theatre (4 mins walk)
- 5 Literary Tour of Bloomsbury (8 mins walk)
- 6 London Transport Museum (10 mins walk)
- 7 Covent Garden (12 mins walk)
- 8 Somerset House (15 mins walk)
- 9 Oxford Street (17 mins walk)
- 10 Bond Street (20 mins walk)





RADISSON BLU EDWARDIAN
KENILWORTH ★★★★★

97 Great Russell Street,
London
WC1B 3LB

T +44 (0)20 7637 3477

F +44 (0)20 7631 3133

E reskeni@radisson.com

W radissonblu-edwardian.com/kenilworth

Owned and managed by Edwardian Hotels London