





## HISTORIC CHARM IN KENSINGTON

Discover a Grade II-listed townhouse hotel, with beautifully designed bedrooms, modern comforts and an atmospheric restaurant, moments away from numerous museums and Gloucester Road tube station.

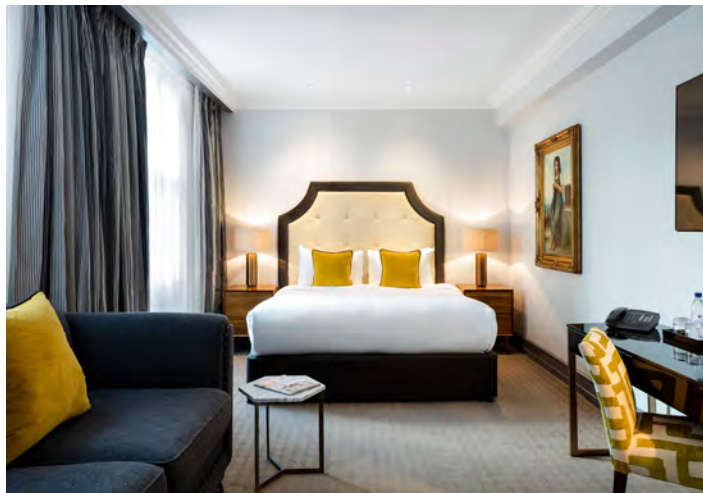


## BEDROOMS

The Vanderbilt's 215 bedrooms blend modern design with the traditional charm of a British Victorian townhouse, while benefitting from premium comforts such as complimentary superfast Wi-Fi, handcrafted Vispring mattresses, 350 thread count Egyptian cotton bedding and goose down pillows.

### 215 air-conditioned bedrooms

- 61 Individual
- 88 Superior
- 47 Premium
- 18 Family
- 1 Suites





## MEETING & EVENTS

The Vanderbilt offers 12 meeting rooms with capacity of up to 140 guests. Of these rooms, five private dining suites are available for up to 100 guests.

The hotel's facilities lend themselves well to smaller meetings, such as advisory boards, speaker meetings and training programmes, as well as being particularly appropriate for internal meetings due to the quieter Kensington location. Social events such as birthdays and baby showers are perfectly catered for as well as corporate formal events.

**12 conference and meeting rooms.**

**Capacity of up to 140.**

**5 private dining suites available  
for up to 100 guests.**

[M&E Brochure](#)

[Virtual Tour](#)



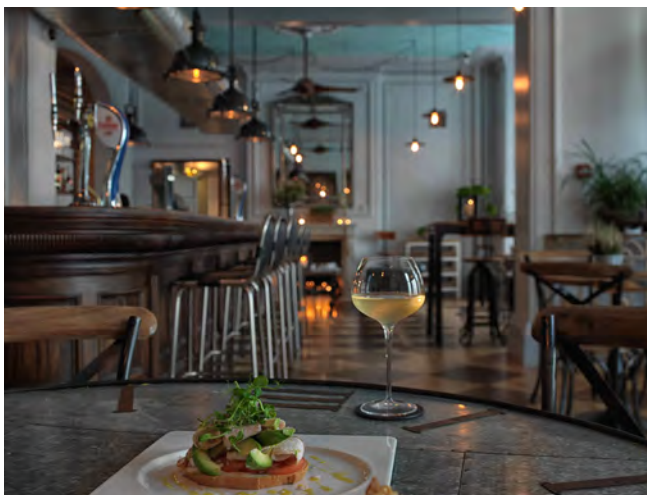


# RESTAURANT

## Scoff & Banter


Set in the fashionable Royal Borough of Kensington and Chelsea, Scoff & Banter Kensington welcomes you to dine in the beautiful old Vanderbilt family mansion. Flooded with natural light, our atmospheric dining room is the perfect place to relax with our selection of modern European dishes, prepared using carefully selected and locally sourced produce.

[Discover more](#)





## FACILITIES & SERVICES

- Complimentary Wi-Fi up to 150Mbps on unlimited devices 
- Edward virtual host 
- Satellite and pay movies
- In-room safe and mini fridge (stocked on request)
- In-room spa services
- 24-hour business centre
- 24-hour room service
- 24-hour fully-equipped gym
- Nespresso coffee machines available in all room types
- Complimentary bottled water
- Complimentary digital newspaper and magazines



## TRAVEL

### Car Park

Gloucester Road (6 mins walk)

### Underground

Gloucester Road  
(Piccadilly, Circle and District Lines)

### Trains

Paddington (1.3 miles)  
Victoria (1.8 miles)  
King's Cross St. Pancras  
Eurostar (2.5 miles)

### Airport

City Airport (11 miles)  
Heathrow (13 miles)  
Gatwick (32 miles)  
Luton (35 miles)  
Stansted (40 miles)



## POINTS OF INTEREST

- 1 Natural History Museum (5 mins walk)
- 2 Imperial College London (7 mins walk)
- 3 Science Museum (7 mins walk)
- 4 Victoria & Albert Museum (7 mins walk)
- 5 Royal College of Music (10 mins walk)
- 6 Royal Albert Hall (12 mins walk)
- 7 Harrods (12 mins walk)
- 8 Hyde Park (12 mins walk)
- 9 Design Museum (21 mins walk)
- 10 Olympia Exhibition Centre (25 mins walk)

### RADISSON BLU EDWARDIAN, VANDERBILT ★★★★★

68-86 Cromwell Road,  
London, SW7 5BT

T +44 (0)20 7761 9000

E [resvand@radisson.com](mailto:resvand@radisson.com)

W [radissonblu-edwardian.com/vanderbilt](http://radissonblu-edwardian.com/vanderbilt)

Owned and managed by Edwardian Hotels London

