

42 MEETING SPACES

# UNDER ONE ROOF

UNDER ONE ROOF  
TEXT CAN BE EITHER PRINTED  
NORMALLY IN THE BRAND  
COLOUR LIGHT BLUE.

OR TO GIVE EXTRA SPECIAL FINISH  
WE ALSO RECOMMEND FOILING THIS  
TEXT. TESTING THE FOLLOWING  
FOILS: - FOILCO 6420 (Satin Silver)  
- FOILCO 505 (Satin Light Blue)  
- FOILCO 6075 (Metallic Royal Blue)

WELCOME TO RADISSON BLU EDWARDIAN, HEATHROW

2	SPECIAL EVENTS: SINGULAR SPACES
4	THE COMMONWEALTH SUITE
5	THE ATRIUM
7	THE COUNTY SUITE
10	THE NEWBURY SUITE
13	CLUB CARLSON FOR PLANNERS
15	THE CONNAUGHT SUITE
15	THE ROYAL SUITE
16	PRIVATE SUITE 38 AND FOYER
16	ADDITIONAL ROOMS
19	RESPONSIBLE BUSINESS
20	CONFERENCE & BANQUETING
23	RESTAURANTS & BARS
26	FOOD TO WAKE YOU UP AND FOOD TO WIND YOU DOWN
29	BEDROOMS & SUITES
30	PEGASUS HEALTH CLUB
31	ADDITIONAL HOTEL FACILITIES
32	DIMENSIONS & ACCESS
33	GUIDELINE CAPACITIES
34	DOWNTIME! THERE'S PLENTY ON YOUR DOORSTEP
36	HOW TO GET HERE

40  
MEETING ROOMS

459  
BEDROOMS

700  
MAXIMUM CAPACITY

550  
CAR PARKING SPACES

04  
RESTAURANTS, BARS  
& TERRACE

01  
HEALTH CLUB

Meeting organisers always face challenges.

What you gain on the meeting space, you lose on bedrooms; what you gain on location, you lose on food choice, and so on.

But, at Radisson Blu Edwardian Heathrow, you don't have to compromise on a single detail.

Because we have them all spectacularly covered: under a single roof.

With 40 different meeting spaces (from 10m<sup>2</sup> all the way up to 502m<sup>2</sup>) you can run a conference for 700 delegates or a dinner for four directors.

All catered to your exact specifications: from fine Indian dining at Annayu, to fast finger food, served to your guests on the go.

And, with 459 bedrooms, if you need the event to last more than a day, you'll have everyone in the same place for breakfast.

In short: if you organise meetings, we should meet.

# SPECIAL EVENTS: SINGULAR SPACES

MINUTES FROM HEATHROW, THIS IS AN  
AIRPORT HOTEL THAT FEELS ANYTHING BUT



THIS PAGE  
County Suite

OPPOSITE PAGE  
Newbury Suite  
Private Room 32



As one of Europe's largest conference centres, the Radisson Blu Edwardian Heathrow Hotel combines dramatic spaces, distinctive design and dedicated service.

To create memorable events – intimate or impressive, formal or flamboyant – that also move like clockwork.

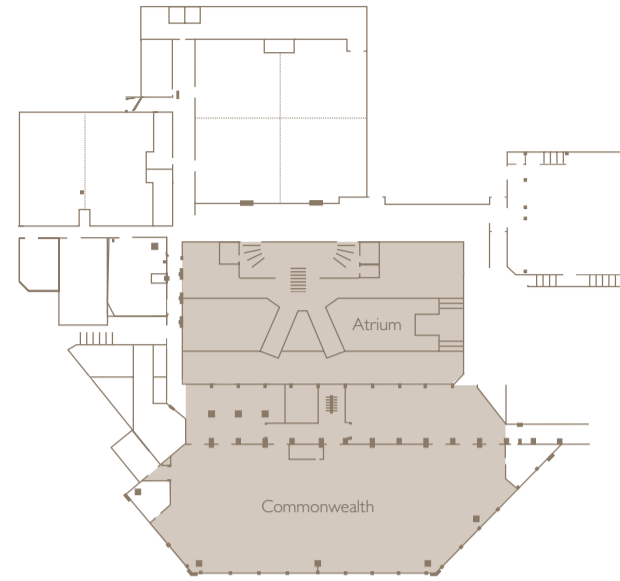
Here are some of the spectacular spaces we offer; under one roof.



## THE COMMONWEALTH SUITE

This is a beautifully designed space for up to 700 guests or delegates. Flooded with natural daylight, it is also surrounded by supremely versatile smaller spaces that can be used as breakout rooms, or for smaller sessions.

Opening on to the glorious hotel Atrium, the Commonwealth Suite is an ideal setting for exhibitions, conferences, parties and weddings.



Commonwealth Suite floor area: 502m<sup>2</sup>  
Atrium floor area: 522m<sup>2</sup>



## THE ATRIUM

The Atrium has dramatic water features that help to create a relaxed, stylish atmosphere for delegates, either in refreshment breaks or for pre- and after-dinner drinks.

Between the Commonwealth Suite and Atrium is our Business Centre, where we can easily assist with logistics or last-minute requests.

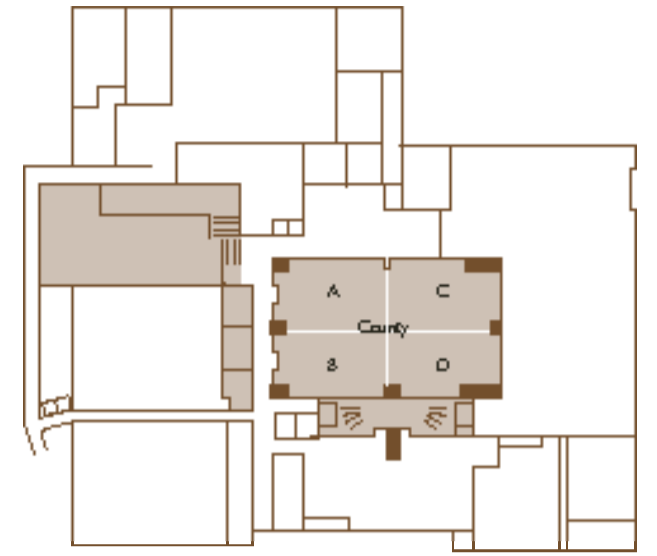




## THE COUNTY SUITE

With its mahogany panelling and striking crystal chandeliers, the County Suite is an ideal location for a statement-making event for up to 500 guests.

As an extra advantage, it has its own private foyer and easily converts into four individual syndicate rooms.



County Suite Floor Area: 400m<sup>2</sup>



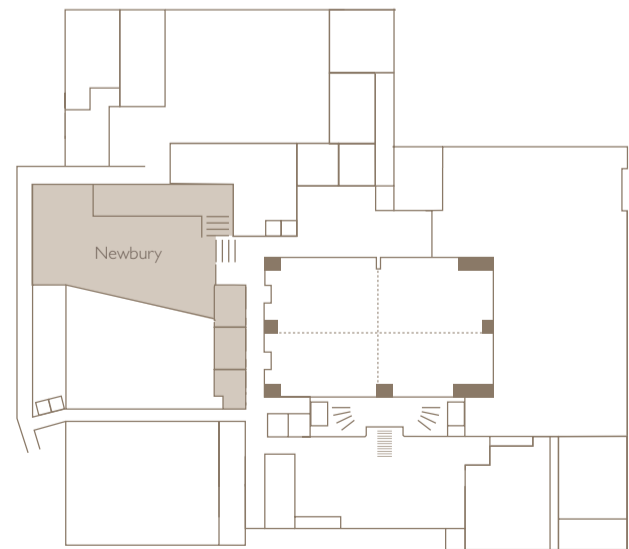




## THE NEWBURY SUITE

An exclusive area catering for up to 500 guests, The Newbury Suite is an impressive atrium, with its own water features and high glass ceilings that keep the whole space bathed in natural light.

We usually combine this suite with the County Suite, to give your guests a calming retreat during breaks, lunch and pre-dinner drinks.



Newbury Suite I Floor Area: 288m<sup>2</sup>  
Newbury Suite II Floor Area: 170m<sup>2</sup>



# CLUB CARLSON *for planners*

This is a unique hotel rewards programme, created exclusively for meeting and event planners.

Whether you specialise in planning corporate events, dinners or weddings, you can earn points when you book your event at more than 1,000 participating Carlson Rezidor hotels worldwide.

You'll earn points for every pound you spend at qualifying events. Then you can convert your points into free award nights at any of our participating hotels around the world.

You can also redeem your points for airline miles, prepaid cards and more.

For more information and to enrol in Club Carlson, visit [clubcarlson.com](http://clubcarlson.com)



## THE ROYAL SUITE

An alternative to our larger Commonwealth Suite, the stylish and distinctive Royal Suite is the ideal space for a medium sized conference or a glamorous dinner.

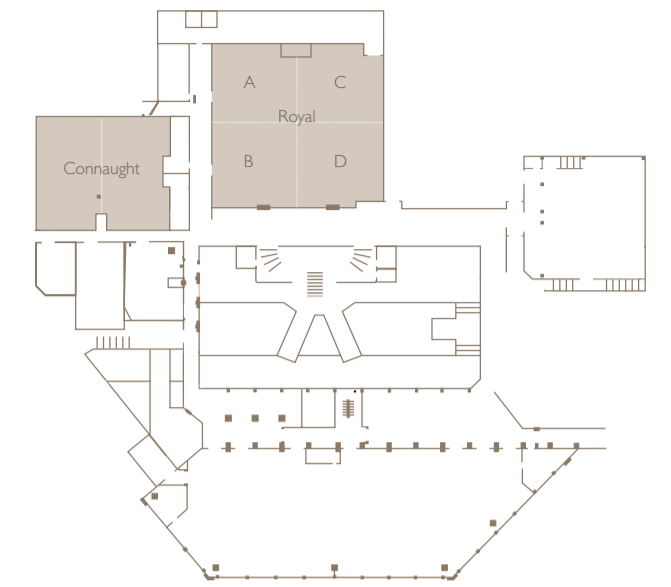
Situated at the head of our magnificent, grand marble staircase and with space for up to 300 people theatre style or 250 for dinner, the suite opens out towards the Atrium for pre- and post-event receptions.

## THE CONNAUGHT SUITE

Situated at the heart of the hotel's conference "hub", this elegant suite can host up to 150 guests for a theatre-style conference, or 120 for dinner.

If natural daylight is a "must" for your event, this room is perfect during the day; in the evening, stunning chandeliers create an atmosphere that is both warm and sophisticated.

The central partition provides extra versatility, as the space can be easily divided for breakout sessions, lunches or pre-drinks.



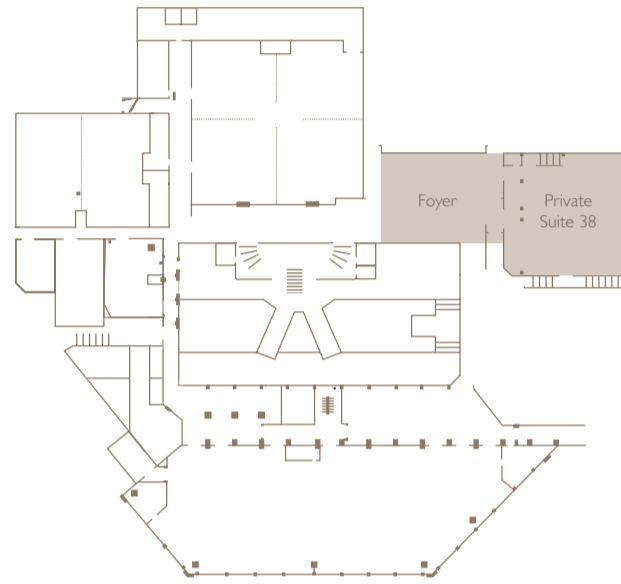
Connaught suite floor area: 154m<sup>2</sup>  
Royal Suite floor area: 271m<sup>2</sup>



## PRIVATE SUITE 38 AND FOYER

Light, airy and situated well away from the bustle of the rest of the hotel, this is a more intimate space that is perfect for medium-sized events like a private meeting or a dinner dance.

Accommodating up to 100 guests for a theatre-style conference or 100 for dinner, it also has its own private foyer area, ideal for both refreshments and registration/drinks receptions.



Private Room 38 floor area: 120m<sup>2</sup>



## ADDITIONAL ROOMS

As well as these spectacular event spaces, we have a range of smaller rooms for more intimate meetings (or breakouts from your main event).

Ideal for 10 to 15 people, all our meeting spaces have complimentary high-speed Wi-Fi and intelligent AV.

Each meetings package also has these following features:

- LCD screen, AV and flipchart
- Wi-Fi and printing
- Mineral water in meeting room
- Breakfast, lunch or afternoon tea menus
- Stationery in each room
- Air conditioning

*For detailed floor plans and specifications on all our suites and meeting rooms, please refer to the inserts in the back pocket of this brochure.*



In recognition of our commitment to Green Tourism, Radisson Blu Edwardian, Heathrow has been awarded Gold Membership.

# RESPONSIBLE BUSINESS

AS A COMPANY, WE ARE COMMITTED TO THE WELLBEING OF OUR PLANET AND ITS INHABITANTS, PRESENT AND FUTURE. WITHOUT COMPROMISING ON OUR GUESTS' EXPERIENCE AND SATISFACTION, WE STRIVE TO IMPROVE OUR OVERALL ECOLOGICAL AND CARBON FOOTPRINT, USING THE MOST RESPONSIBLE WORKING PRACTICES.

## MEET WELL

We have built our reputation on delivering successful meetings and events, but we also want to make our success sustainable. It's all part of Meet Well: an approach to meetings and events that not only reduces our environmental impact but also means we can give something back to the community.

## GREENTOURISM

We are very proud to be part of the Green Tourism Business Scheme.

These independently assessed awards recognise traditional energy and resource management, as well as businesses that actively promote public transport, local cultural activities and the enjoyment of London's open spaces.



## SECURITY

We take the security of our customers very seriously. We have internal and external CCTV, and an electronic locking system in all rooms.

## CHARITY

RBE Heathrow supports Carlson nominated charities, and a range of charities that support the local communities.

# CONFERENCE & BANQUETING

WHETHER YOU'RE SCHEDULING A BREAKFAST MEETING FOR FOUR OR A BANQUET FOR 550, RBE HEATHROW CAN CATER TO EVERY NEED.

Flexible space, fantastic choice, flawless delivery: for events organisers, they're all favourites on the menu here.

We have exceptional experience at creating and running large events, while making sure that the smallest details are taken care of.

## EXPERIENCE MEETINGS

Developed by Radisson Blu, this is a new concept which recognises that successful meetings need more than meticulous planning. It works on three principles: healthy eating, mental stimulation and the value of technology.

## BRAIN FOOD

Designed by experts, Brain food encourages fresh thinking by concentrating on healthy food.

It is based on six key ingredients: lots of fish; whole grain products; fruit and vegetables; fresh, locally sourced pure ingredients with minimal industrial processing; less meat and lower fat content; and natural sweeteners with less added sugar.

We focus on taste, nutrition and stimulating the senses, to help participants to stay alert and creative throughout the day.

## BRAIN BOX

Brain boxes are a new style of break out rooms designed to inspire creativity within the ultimate think tank. Sensory and fun, the innovative rooms are based on 4 key learning styles: auditory, visual, tactile and kinesthetic.

Using bright colours, flexible furniture and the latest in audiovisual technology, the space is designed to stimulate teamwork.

## TECHNOLOGY

All our conference and meeting rooms are equipped with the latest presentation and communication technology, so we can provide private secure network for all your delegates.



# RESTAURANTS, BARS & TERRACE

WHILST WE'RE ALWAYS HAPPY TO CATER SPECIFICALLY FOR PRIVATE EVENTS OF EVERY KIND, RBE HEATHROW ALSO HAS TWO DISTINCTIVE RESTAURANTS, A VERY STYLISH BAR AND AN ALFRESCO TERRACE WHERE GUESTS AND DELEGATES CAN EAT, DRINK, MINGLE AND RELAX.

## ANNAYU

Annayu serves delicious Indian dishes in exotic and comfortable surroundings.

Our Head Chef has created an authentic Indian menu with a distinctly modern twist: placing experimental starters and desserts either side of traditional classic main courses.

## STEAK & LOBSTER

It isn't just our name: it's our menu.

With fewer options, we can focus on perfecting what we do best: like 10 ounce, dry aged rib eye steaks; and fresh whole lobster, served on the half shell.

All cooked to perfection in a restaurant that is easy going, modern and stylish.

## BIJOU BAR

A dramatic new departure, our Bijou Bar brings West End style to Heathrow. It's the perfect place to enjoy an evening cocktail in stylish surroundings, under a striking modern chandelier.

## TERRACE

With comfortable sofas, big TV screens and delicious food from our Steak & Lobster restaurant menu, our covered terrace is a place to eat, drink, watch sport and relax, all year round.

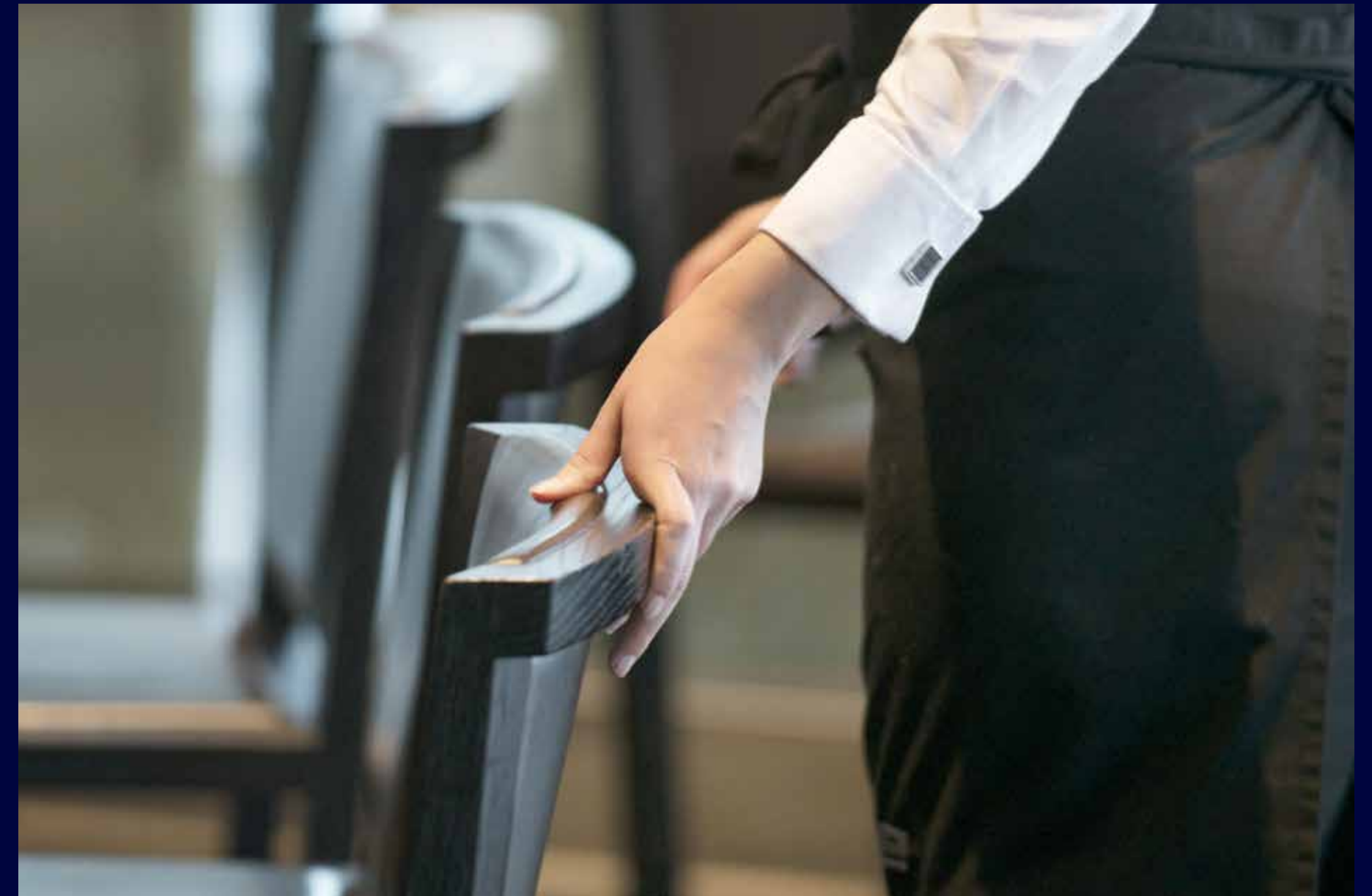
Our Annayu restaurant offers Indian dining at its finest: a culinary journey through the regional tastes and textures of India, carefully crafted for the contemporary palate.





# FOOD TO WAKE YOU UP FOOD TO WIND YOU DOWN

AT THE RADISSON BLU EDWARDIAN HEATHROW,  
WE CAN CATER TO MOST TASTES, MOST EVENT  
BUDGETS AND ANY TIME OF DAY.



For events, we offer a wide range of menus, options and catering styles, including:

- Breakfast (breakfast canapes, continental breakfast, English breakfast)
- Refreshers and energisers throughout the day (from tea, coffee and muffins to full afternoon tea)
- Soup, sandwiches and salads (with a full salad bar in your meeting room)
- Working lunches (open sandwiches, salads, hot mains and desserts)
- Bento boxes (up to 30 people)
- Restaurant buffet
- Pre-dinner canapes
- Live cooking
- International themed buffets
- Formal seated lunches and dinners

We also have an extensive list of wines, old world and new, including dessert wines and Champagnes.



86  
STANDARD TWINS

236  
STANDARD DOUBLES

100  
DELUXE DOBLES

17  
DELUXE TWINS

17  
SUITES

# BEDROOMS & SUITES

THE RADISSON BLU EDWARDIAN HEATHROW HAS  
459 BEDROOMS INCLUDING 17 LUXURIOUS SUITES.

All our rooms offer the warmth of traditional mahogany furniture and the comfort of rich English fabrics and crisp cotton bed linen.

Bathrooms are clad in Sicilian Carrara marble with Jacob Delafon bathware; and all windows are triple-glazed.

All rooms feature:

- Individual air conditioning
- Express check out
- In-room laptop safe
- In-room bar
- High-speed modem connection
- i-pod docking station
- Personal phone number with voice mail
- Satellite TV and pay movies
- Trouser press
- Iron and ironing board
- Hairdryer
- Stationery
- Complimentary magazines

There are four lifts accessing all floors.



# PEGASUS SPA & GYM

THE PERFECT WAY FOR DELEGATES TO WIND  
UP TO (OR DOWN FROM) YOUR EVENT.

Our Pegasus Health Club has a fully equipped modern gym, with enough state-of-the-art equipment to give the most fanatic of fitness freaks a full work out.

And, if you prefer serenity, we can do that too.

The Pegasus Spa is a calm urban retreat where guests can relax, refresh and re-energise in luxury, with a full range of beauty products to hand.

Included in the price of all our spa treatments is full use of the following facilities:

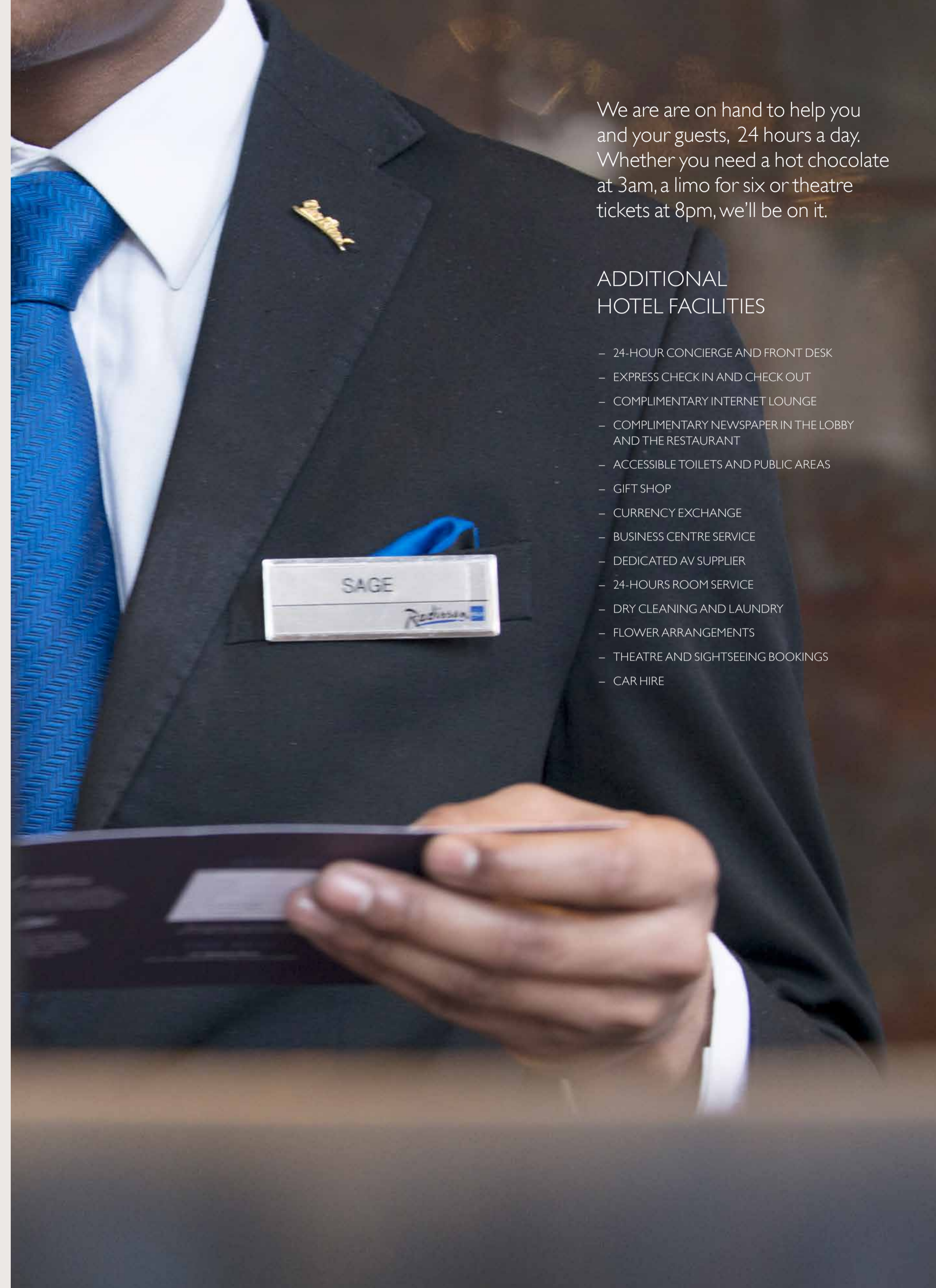
- Dry heat sauna
- Eucalyptus essence steam room
- Plunge pool
- Relaxation room with complimentary refreshments



We are on hand to help you and your guests, 24 hours a day. Whether you need a hot chocolate at 3am, a limo for six or theatre tickets at 8pm, we'll be on it.

## ADDITIONAL HOTEL FACILITIES

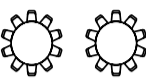
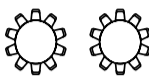
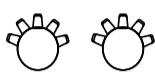
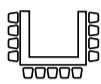
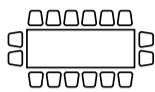
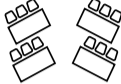
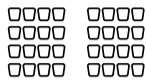
- 24-HOUR CONCIERGE AND FRONT DESK
- EXPRESS CHECK IN AND CHECK OUT
- COMPLIMENTARY INTERNET LOUNGE
- COMPLIMENTARY NEWSPAPER IN THE LOBBY AND THE RESTAURANT
- ACCESSIBLE TOILETS AND PUBLIC AREAS
- GIFT SHOP
- CURRENCY EXCHANGE
- BUSINESS CENTRE SERVICE
- DEDICATED AV SUPPLIER
- 24-HOURS ROOM SERVICE
- DRY CLEANING AND LAUNDRY
- FLOWER ARRANGEMENTS
- THEATRE AND SIGHTSEEING BOOKINGS
- CAR HIRE



DIMENSIONS  
& ACCESS

NAME OF ROOM	HEIGHT IN M.	AREA IN M²	LENGTH	WIDTH	DAY-LIGHT	FULLY AIR-COND	3 PHASE POWER	GUEST LIFT ACCESS/ DISABLED ACCESS
atrium	7	522	17.71	29.27	Y	Y	N	Y
COMMONWEALTH SUITE	4.4	502	37.74	14.65	Y	Y	Y	Y
COMMONWEALTH EAST	4.4	272	21.44	14.65	Y	Y	Y	Y
COMMONWEALTH WEST	4.4	230	16.3	14.65	Y	Y	Y	Y
COUNTY	3.6	400	18.81	22.32	N	Y	Y	Y
COUNTY A	3.6	95	10.51	8.72	N	Y	Y	Y
COUNTY B	3.6	77	8.3	8.72	N	Y	Y	Y
COUNTY C	3.6	125	10.51	13.61	N	Y	Y	Y
COUNTY D	3.6	103	8.3	13.61	N	Y	Y	Y
ROYAL	3.3	271	18.39	14.77	N	Y	Y	Y
ROYAL A	3.3	64	7.37	8.9	N	Y	Y	Y
ROYAL B	3.3	64	7.4	8.9	N	Y	Y	Y
ROYAL C	3.3	68	7.37	9.49	N	Y	Y	Y
ROYAL D	3.3	75	7.4	9.49	N	Y	Y	Y
NEWBURY I	10	288	13.7	13	Y	Y	Y	N
NEWBURY II	3.3	170	9.23	18.4	Y	Y	Y	N
CONNAUGHT	2.6	154	13.05	11.85	Y	Y	Y	Y
CONNAUGHT A	2.6	77	6.51	11.85	Y	Y	Y	Y
CONNAUGHT B	2.6	77	6.54	11.85	Y	Y	Y	Y
PRIVATE ROOM 11	2.4	126	15.4	8.69	Y	Y	N	Y
PRIVATE ROOM 12	2.4	120	15.45	7.78	Y	Y	N	Y
PRIVATE ROOM 15	2.5	14	4	3.2	N	Y	N	Y
PRIVATE ROOM 16	2.2	18	4.13	4.27	N	Y	N	Y
PRIVATE ROOM 17	2.2	18	4.7	3.75	N	Y	N	Y
PRIVATE ROOM 18	2.2	29	7.24	4.45	N	Y	N	Y
PRIVATE ROOM 19	2.2	28	5.85	4.68	N	Y	N	Y
PRIVATE ROOM 30	2.3	20	6.51	2.97	Y	Y	N	Y
PRIVATE ROOM 31	2.9	28	6.32	4.79	N	Y	N	Y
PRIVATE ROOM 32	2.9	66	11.32	6.09	N	Y	N	Y
PRIVATE ROOM 33	2.9	53	11.32	4.74	N	Y	N	Y
PRIVATE ROOM 34	2.9	28	6.09	4.72	N	Y	N	Y
PRIVATE ROOM 35	2.9	38	6.09	6.6	N	Y	N	Y
PRIVATE ROOM 36	2.9	10	3.9	3.84	Y	Y	N	Y
PRIVATE ROOM 37	2.9	20	4.39	5.7	Y	Y	N	Y
PRIVATE ROOM 38	4.4	120	11.96	10	Y	Y	N	Y
PRIVATE ROOM 40	2.9	58	6.79	10.39	Y	Y	N	Y
PRIVATE ROOM 41	2.3	90	16.77	5.9	N	Y	N	Y
PRIVATE ROOM 42	2.9	42	8.9	6.16	N	Y	N	Y

GUIDELINE  
CAPACITIES



NAME OF ROOM	THEATRE	CLASSROOM	BOARDROOM	USHAPE	CABARET	RECEPTION	LUNCH/DINNER
atrium	-	-	-	-	-	500	-
COMMONWEALTH SUITE	700	350	-	-	400	700	550
COMMONWEALTH EAST	400	130	-	-	180	400	250
COMMONWEALTH WEST	300	130	-	-	150	300	250
COUNTY	500	230	-	-	230	500	350
COUNTY A	100	50	32	20	50	100	60
COUNTY B	70	40	32	28	40	100	50
COUNTY C	120	72	36	34	80	100	100
COUNTY D	90	65	36	32	50	100	60
ROYAL	300	100	-	-	120	450	250
ROYAL A	50	32	24	20	40	60	50
ROYAL B	50	32	24	20	40	60	50
ROYAL C	50	32	24	20	40	60	50
ROYAL D	50	32	24	20	40	60	50
NEWBURY I	-	-	-	-	-	500	250
NEWBURY II	150	80	70	60	120	300	150
CONNAUGHT	150	60	42	42	80	100	120
CONNAUGHT A	60	30	25	30	35	50	30
CONNAUGHT B	60	30	25	30	35	50	30
PRIVATE ROOM 11	100	70	40	35	70	125	100
PRIVATE ROOM 12	100	70	40	35	70	125	100
PRIVATE ROOM 15	-	-	4	-	-	-	-
PRIVATE ROOM 16	-	-	6	-	-	-	-
PRIVATE ROOM 17	-	-	8	-	-	-	-
PRIVATE ROOM 18	-	-	14	-	-	-	-
PRIVATE ROOM 19	-	-	12	-	-	-	-
PRIVATE ROOM 30	-	-	8	-	-	-	-
PRIVATE ROOM 31	-	-	12	-	-	-	10
PRIVATE ROOM 32	50	25	25	18	24	40	30
PRIVATE ROOM 33	50	25	25	25	24	40	30
PRIVATE ROOM 34	15	10	12	8	-	-	12
PRIVATE ROOM 35	15	10	12	8	-	-	12
PRIVATE ROOM 36	-	-	4	-	-	-	-
PRIVATE ROOM 37	-	-	12	-	-	-	-
PRIVATE ROOM 38	100	50	45	35	70	125	100
PRIVATE ROOM 40	36	26	20	16	16	20	20
PRIVATE ROOM 41	50	30	25	20	50	50	50
PRIVATE ROOM 42	30	18	20	14	20	30	20

# DOWNTIME? THERE'S PLENTY ON OUR DOORSTEP

IF THERE IS TIME IN YOUR EVENT SCHEDULE FOR GUESTS AND PARTICIPANTS TO GET OUT AND ABOUT, THERE ARE LOTS OF THINGS TO SEE AND DO, ALL WITHIN EASY REACH OF THE HOTEL.

## 01 WINDSOR CASTLE



**11.5 miles** The oldest and largest occupied castle in the world and the Official Residence of Her Majesty The Queen.

Royal Collection Trust © Her Majesty Queen Elizabeth II 2015

## 02 OSTERLEY PARK



**4.5 miles** Surrounded by gardens, park and farmland, Osterley is one of the last surviving country estates in London.

## 03 SAVILL GARDEN



**9.6 miles** 35 acres of contemporary and classically designed gardens and exotic woodland, this is one of Britain's greatest ornamental gardens.

## 04 HAMPTON COURT



**11.7 miles** Explore 800 years of history in this magnificent palace, whose previous owners include Cardinal Wolsey, Henry VIII and Elizabeth I.

## 05 LEGOLAND



**12.1 miles** With rides, live shows and a host of interactive attractions, LEGOLAND Windsor Resort is a unique family theme park.

## 06 WEMBLEY



**12.8 miles** The home of legendary sporting events and concerts, Wembley Stadium and Wembley Arena stand at the heart of one of London's busiest and most varied communities.

## 07 THAMES BOAT RIDE



**14.9 miles** One of the best ways to see the London sights is to take a river boat along the Thames as it winds its way right through the heart of the city.

## 08 BIG BEN



**15 miles** Actually the name of the great bell inside the clock tower at the Houses of Parliament in Westminster, this is one of the most iconic sights in Europe.

## 09 LONDON EYE



**15.6 miles** The world's tallest observation wheel and now the most popular paid for UK attraction, London's latest landmark provides a spectacular view of the city.

## 10 ASCOT RACES



**16.2 miles** Home to the Derby and the jewel of British flat racing, Ascot Racecourse offers a memorable day out.



# HOW TO GET HERE

GIVEN ITS CLOSE PROXIMITY TO THE UK'S LEADING AIRPORT, THE RADISSON BLU EDWARDIAN IS EASILY ACCESSIBLE BY ALMOST EVERY FORM OF TRANSPORT.

Our commitment to environmentally responsible travel naturally leads us to favour public transport, and links are excellent for visitors travelling to and from the hotel by bus, overground train, underground and, soon, CrossRail. Car (and taxi) drivers can also reach us easily, using the M4 motorway.

### BY TRAIN

By London Underground (The Tube)  
Take the Piccadilly Line to Hatton Cross (50 minutes from Piccadilly Circus). Then take the free local buses (285, 423, 555) and ask the driver for the Radisson Blu hotel on Bath Road. Transfer time: 10 minutes.

### BY HEATHROW EXPRESS

Heathrow Express is a fast-track train from Paddington Station to Heathrow Terminals 1, 2, 3 & 4. It takes just 15 minutes to get to/from central London (services run every 15 minutes, 05.02 – 23.47 daily).

Take the Heathrow Express train to Terminals 1-3. Transfer to the free shuttle bus (285, 423, 555), and ask the driver for the Radisson Blu hotel on Bath Road.

### FROM HEATHROW AIRPORT TO HOTEL

From Terminals 1, 2 & 3: a five minute taxi ride, or take the free shuttle bus (285, 423, 555) and ask the driver for the Radisson Blu hotel on Bath Road.

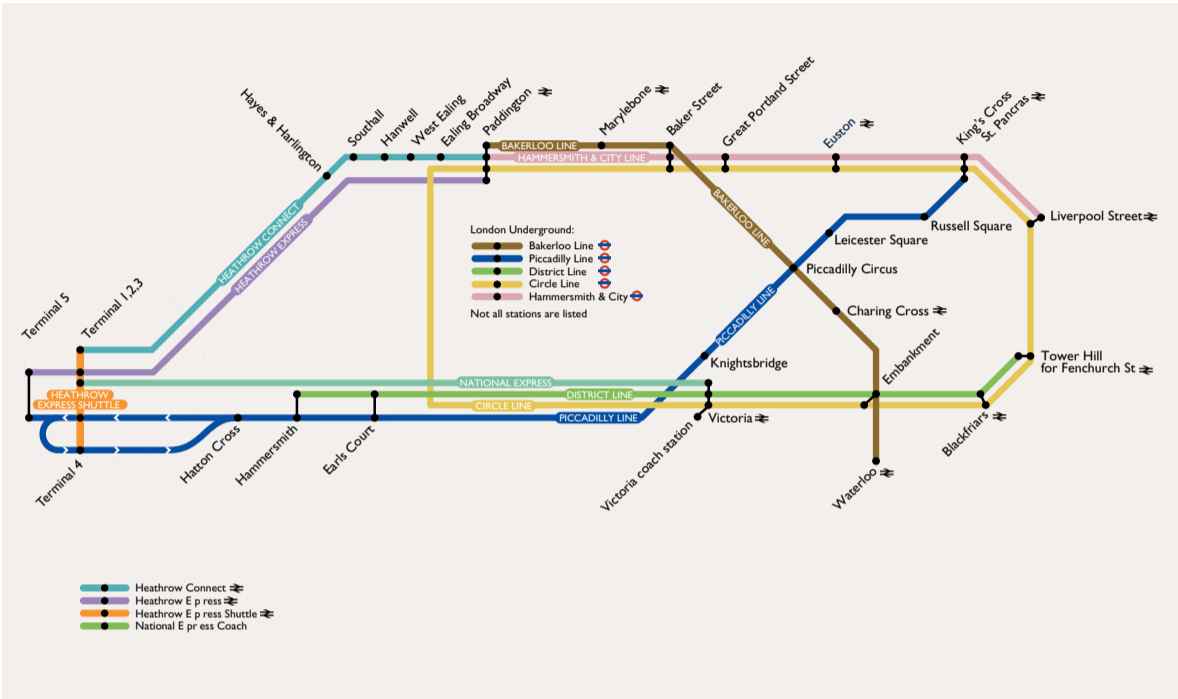
From Terminal 4: 10 mins by taxi  
From Terminal 5: 12 mins by taxi

### HOPPA BUS

You can also buy a ticket to the Heathrow Hotel, Hoppa Bus (H3 and H53), which runs frequently between the airport and the hotel, from 05.10 – 23.52 daily.

### BY CAR

From Junction 16 off of the M25, follow signs to the M4. Then take Junction 4 off the M4, follow signs to Terminals 1, 2 & 3. At the roundabout, take A4 exit onto Bath Road. Continue for about 1/2 km: the hotel entrance is 2nd on the left.




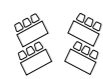
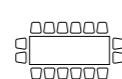
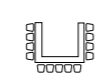
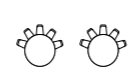

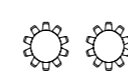


# GROUND FLOOR PLANS

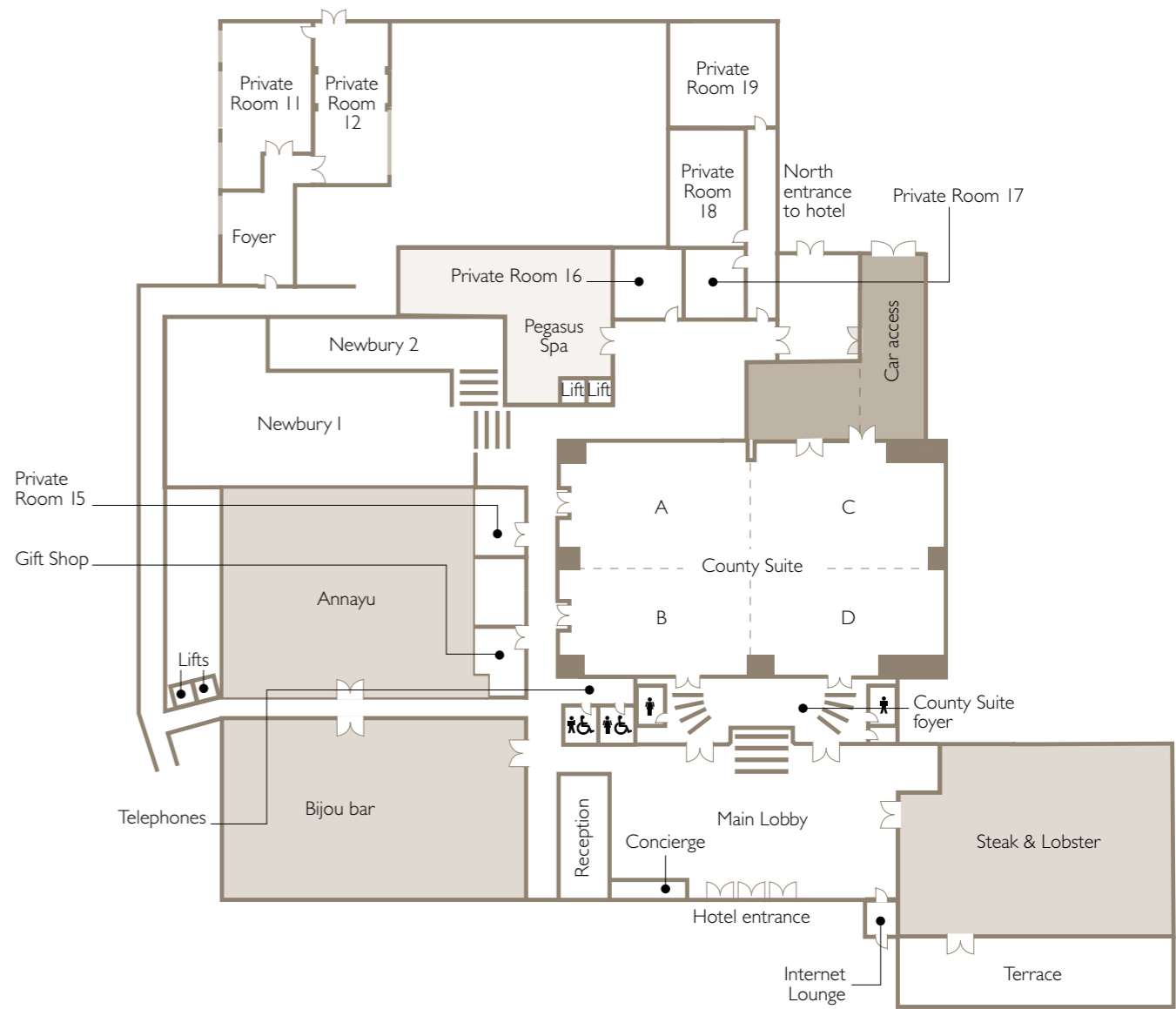
MEETINGS & EVENTS AT RADISSON BLU EDWARDIAN, HEATHROW

e: [htrwcb@radisson.com](mailto:htrwcb@radisson.com)  
t: +44 (0)20 8757 7903

GUIDELINE  
CAPACITIES

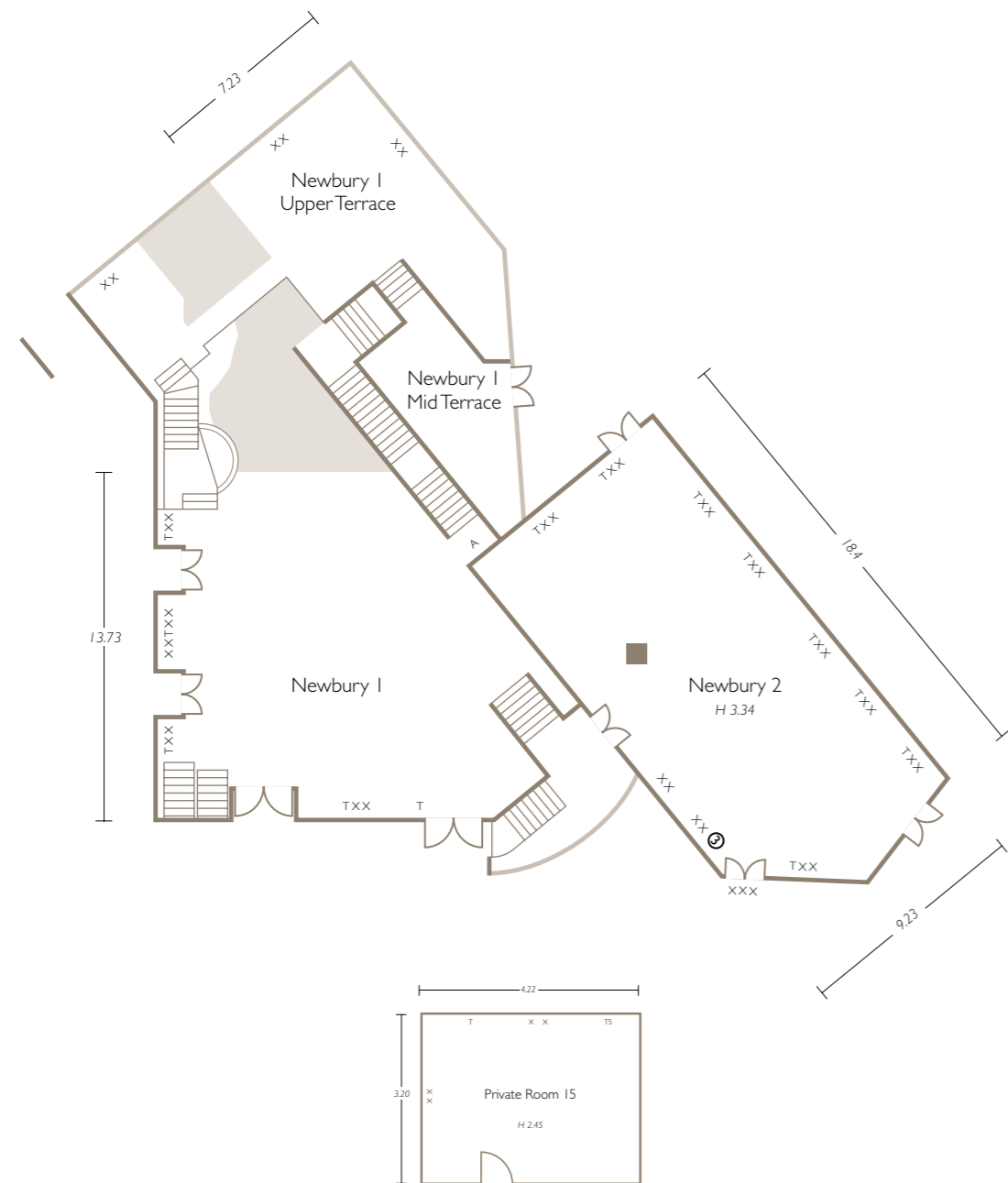
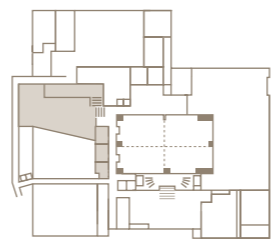
							
NAME OF ROOM	THEATRE	CLASSROOM	BOARDROOM	U-SHAPE	CABARET	RECEPTION	LUNCH/DINNER
COUNTY	500	230	-	-	230	500	350
COUNTY A	100	50	32	20	50	100	60
COUNTY B	70	40	32	28	40	100	50
COUNTY C	120	72	36	34	80	100	100
COUNTY D	90	65	36	32	50	100	60
NEWBURY I	-	-	-	-	-	500	250
NEWBURY II	150	80	70	60	120	300	150
PRIVATE ROOM 11	100	70	40	35	70	125	100
PRIVATE ROOM 12	100	70	40	35	70	125	100
PRIVATE ROOM 15	-	-	4	-	-	-	-
PRIVATE ROOM 16	-	-	8	-	-	-	-
PRIVATE ROOM 17	-	-	6	-	-	-	-
PRIVATE ROOM 18	-	-	14	-	-	-	-
PRIVATE ROOM 19	-	-	12	-	-	-	-

GROUND FLOOR

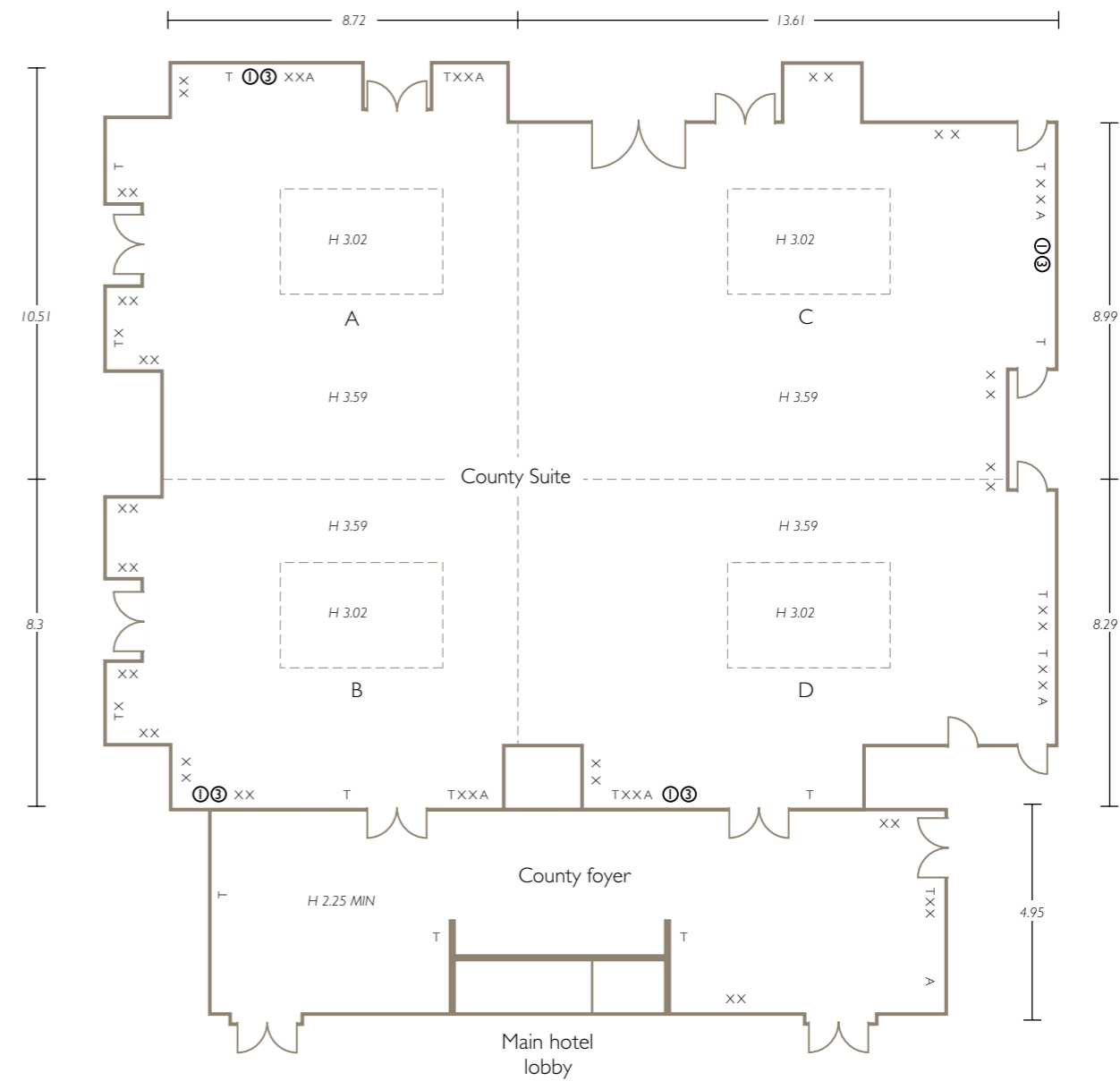
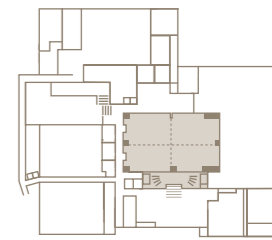


Key	
	= Bar & restaurants
	= Beauty & fitness

NEWBURY SUITE  
PRIVATE ROOM 15



COUNTY SUITE

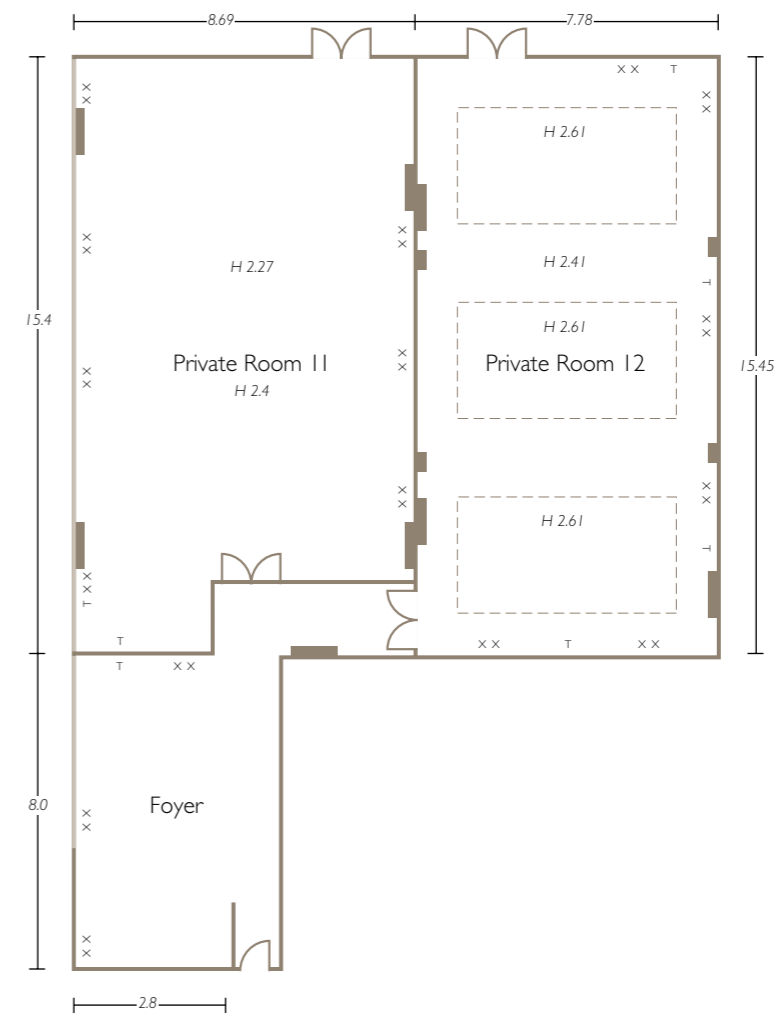
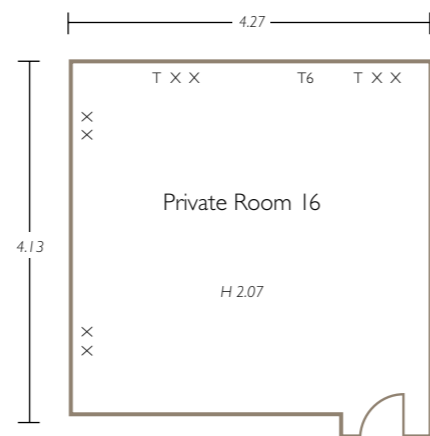
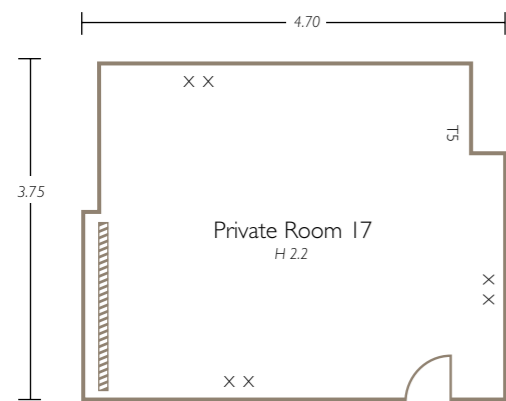
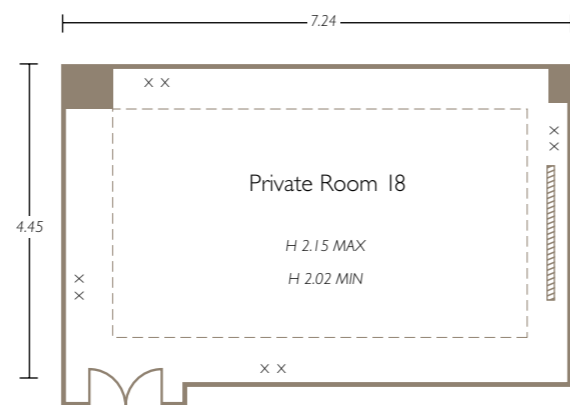
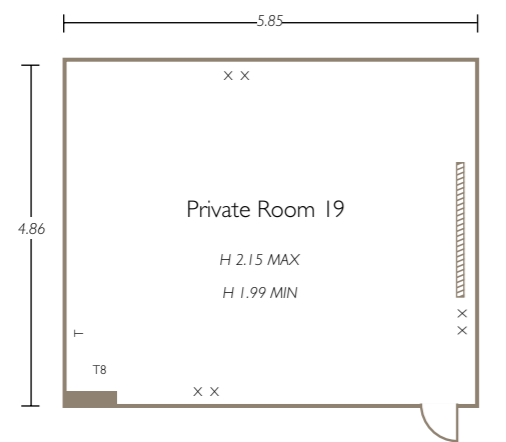
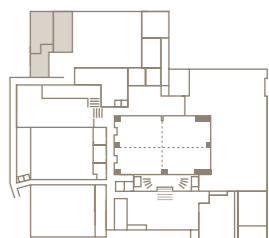


Key	
T	= Telephone
X	= 13 amp socket
A	= TV aerial
T5	= Data access point
①	= Single phase (32A) commando socket
③	= Three phase (32A) commando socket

PRIVATE ROOMS 16-19



PRIVATE ROOMS 11-12



Key	
T	= Telephone
X	= 13 amp socket
A	= TV aerial
T5	= Data access point

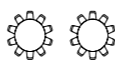


# THIRD FLOOR PLANS

MEETINGS & EVENTS AT RADISSON BLU EDWARDIAN, HEATHROW

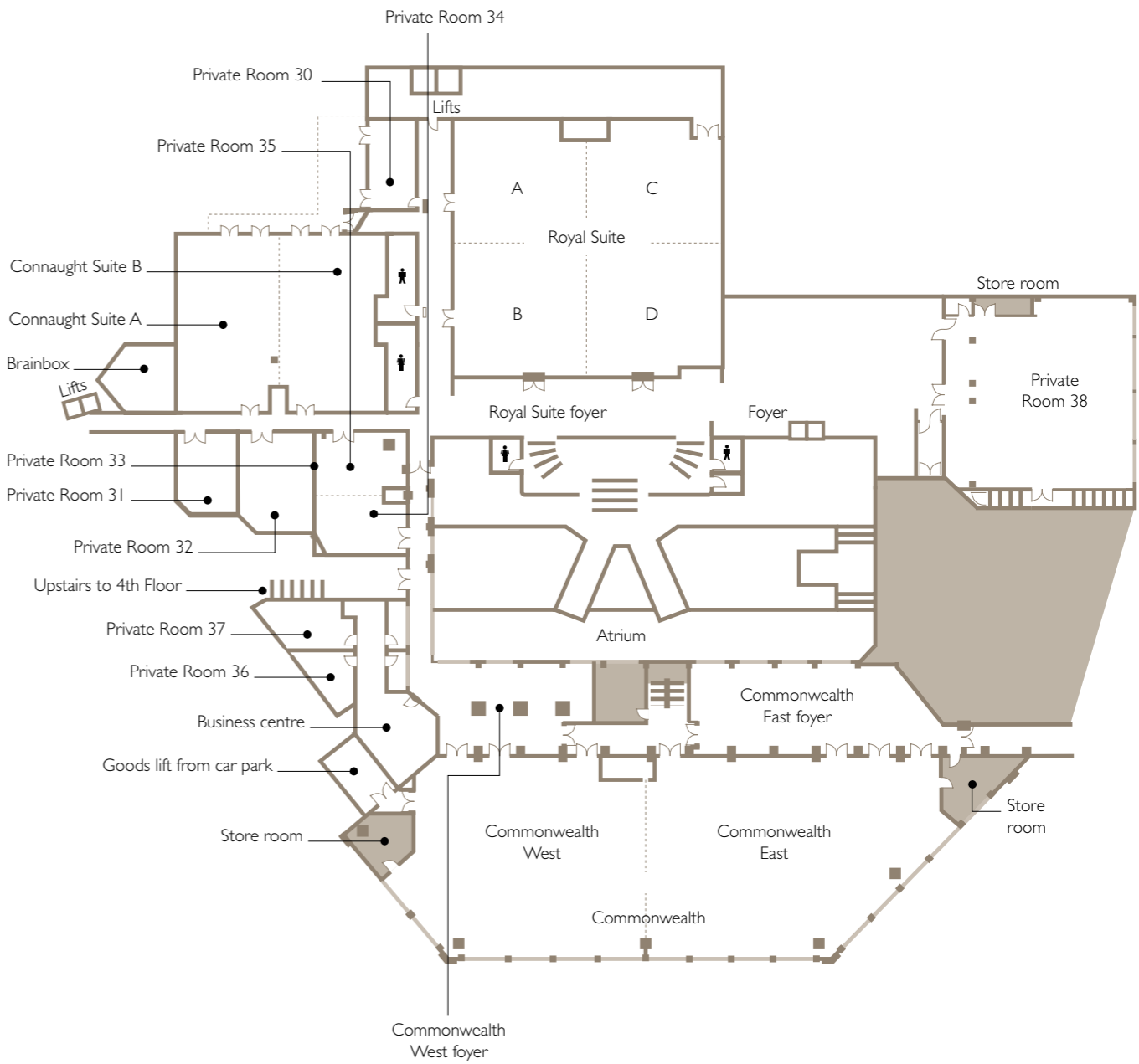
e: [htrwcb@radisson.com](mailto:htrwcb@radisson.com)  
t: +44 (0)20 8757 7903

GUIDELINE  
CAPACITIES

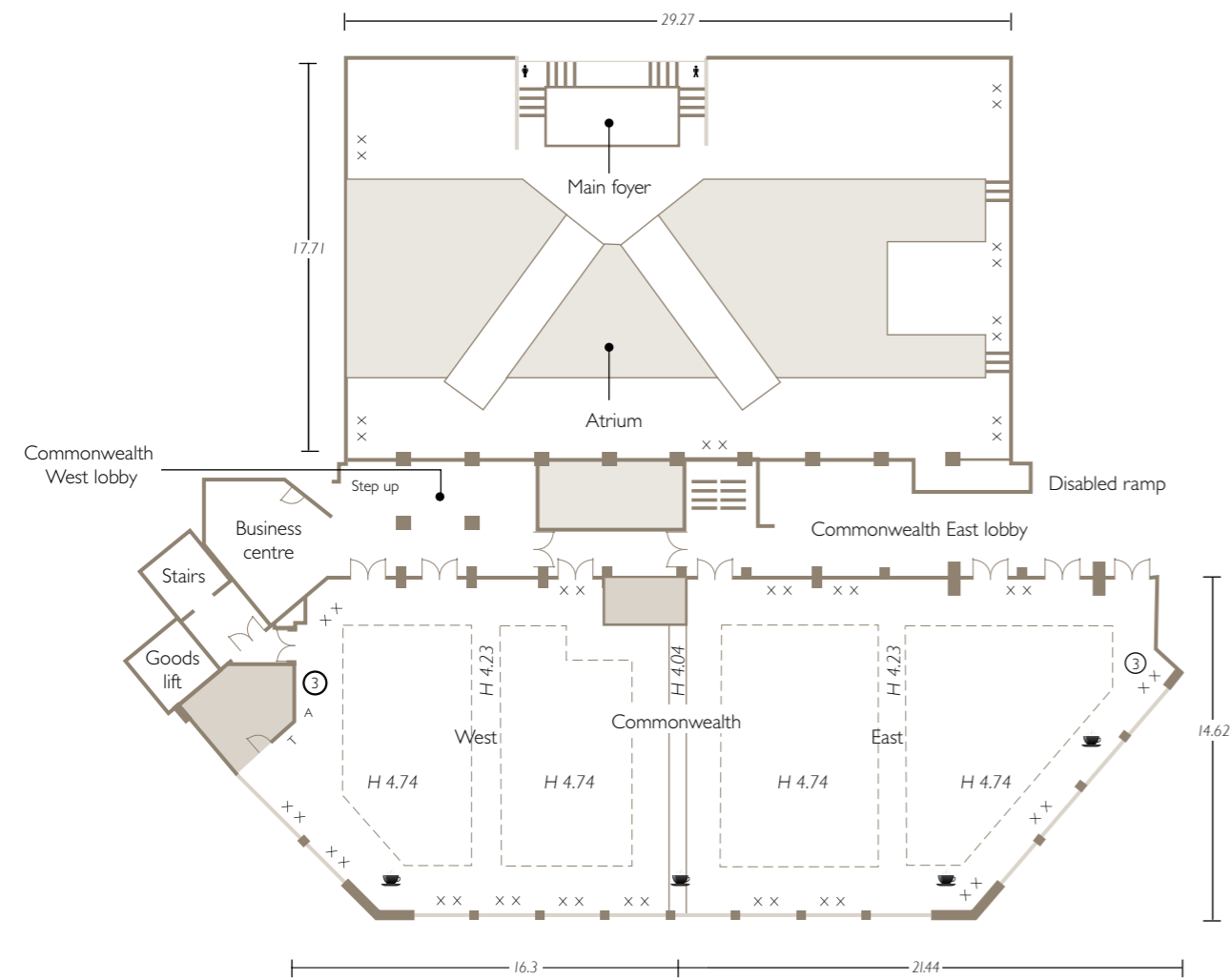
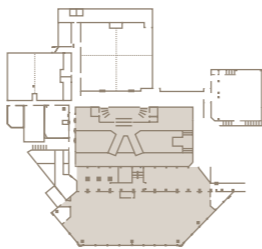


NAME OF ROOM	THEATRE	CLASSROOM	BOARDROOM	U-SHAPE	CABARET	RECEPTION	LUNCH/DINNER
atrium	-	-	-	-	-	500	-
Commonwealth Suite	700	350	-	-	400	700	550
COMMONWEALTH EAST	400	130	-	-	180	400	250
COMMONWEALTH WEST	300	130	-	-	150	300	250
ROYAL	300	100	-	-	120	450	250
ROYAL A	50	32	24	20	40	60	50
ROYAL B	50	32	24	20	40	60	50
ROYAL C	50	32	24	20	40	60	50
ROYAL D	50	32	24	20	40	60	50
CONNAUGHT	150	60	42	42	100	150	120
CONNAUGHT A	60	30	25	30	50	60	50
CONNAUGHT B	60	30	25	30	50	60	50
PRIVATE ROOM 30	-	-	8	-	-	-	-
PRIVATE ROOM 31	-	-	12	-	-	-	10
PRIVATE ROOM 32	50	25	25	18	24	40	30
PRIVATE ROOM 33	50	25	25	25	24	40	30
PRIVATE ROOM 34	15	10	12	8	-	-	12
PRIVATE ROOM 35	15	10	12	8	-	-	12
PRIVATE ROOM 36	-	-	4	-	-	-	-
PRIVATE ROOM 37	-	-	10	-	-	-	-
PRIVATE ROOM 38	100	50	45	35	70	125	100
THE BRAINBOX			15				

THIRD FLOOR

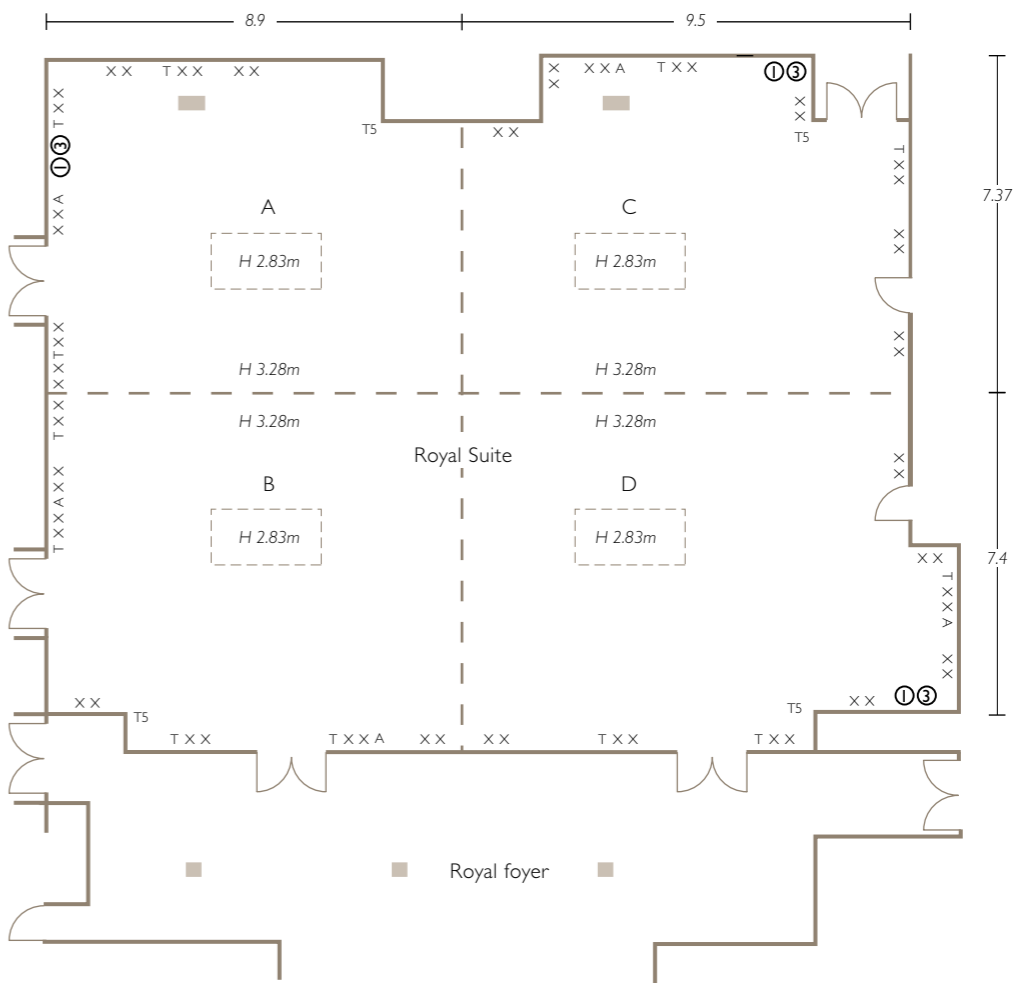
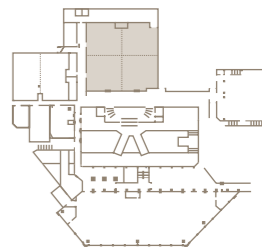


# COMMONWEALTH SUITE & ATRIUM



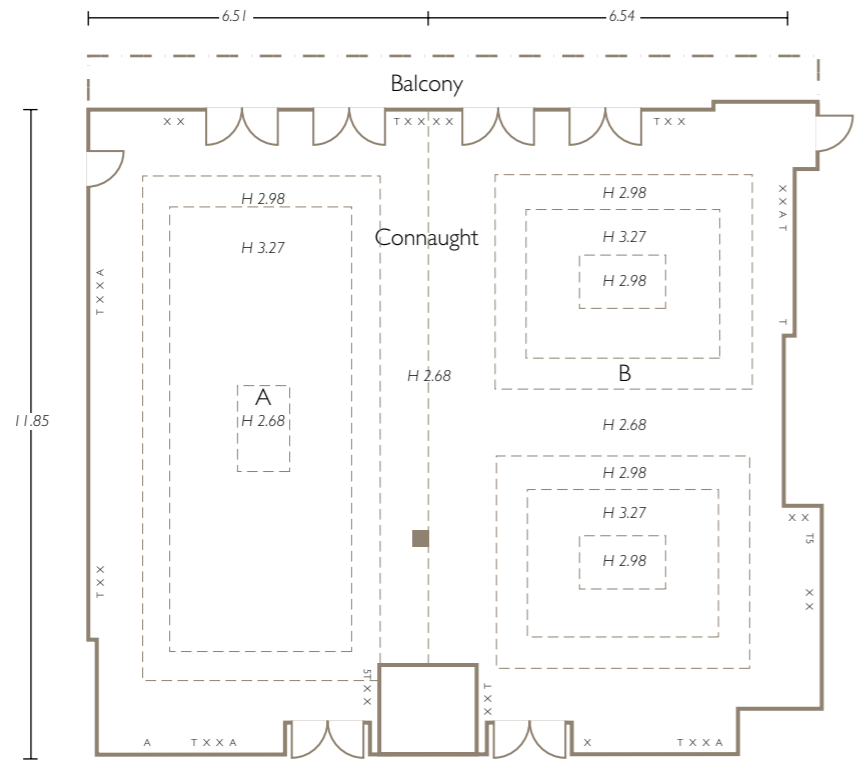
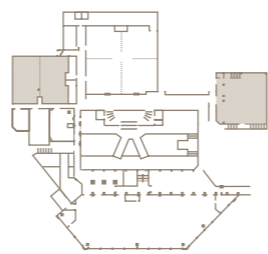
Key	
T	= Telephone
X	= 13 amp socket
A	= TV aerial
TS	= Data access point
①	= Three phase (125A) commando socket

# ROYAL SUITE (A – D)



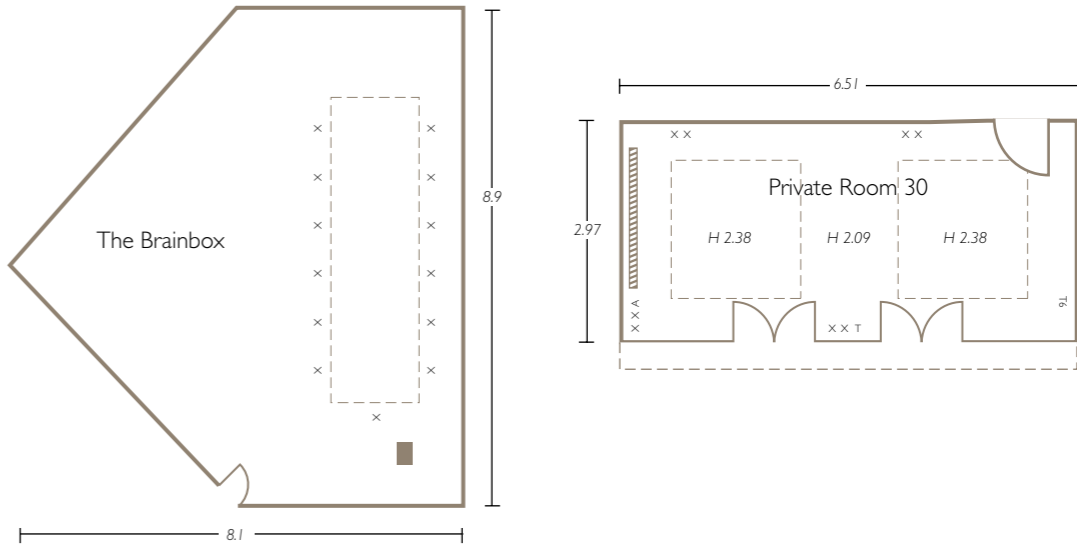
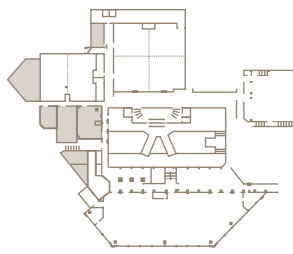
Key	
T	= Telephone
X	= 13 amp socket
A	= TV aerial
TS	= Data access point
①	= Single phase (32A) commando socket
②	= Three phase (32A) commando socket

CONNAUGHT SUITE (A & B)  
PRIVATE ROOM 38



Key	
T	= Telephone
X	= 13 amp socket
A	= TV aerial
T5	= Data access point

PRIVATE ROOMS 30 – 37  
& THE BRAIN BOX





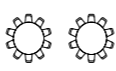
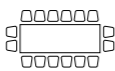
# FOURTH FLOOR PLANS

MEETINGS & EVENTS AT RADISSON BLU EDWARDIAN, HEATHROW



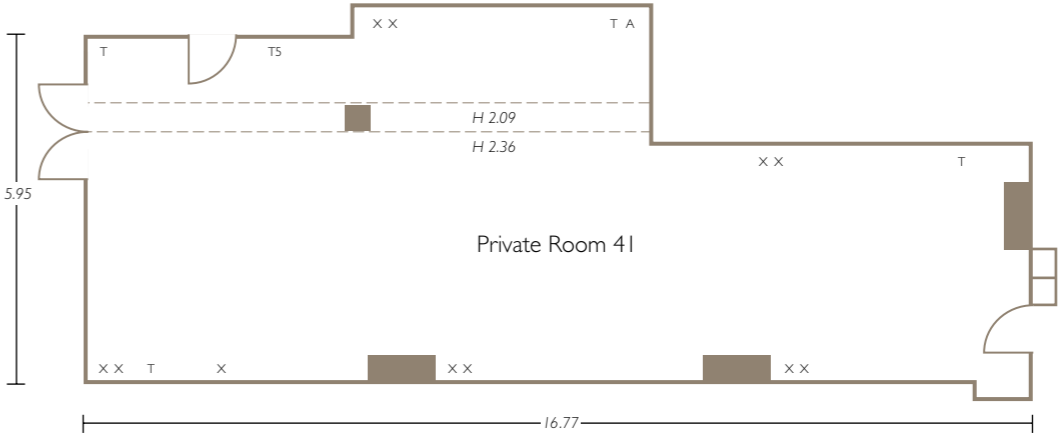
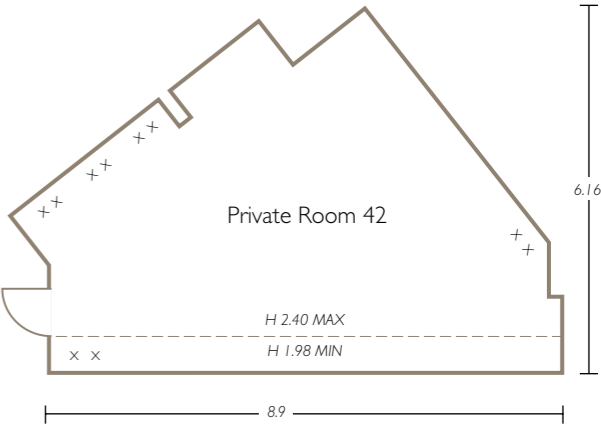
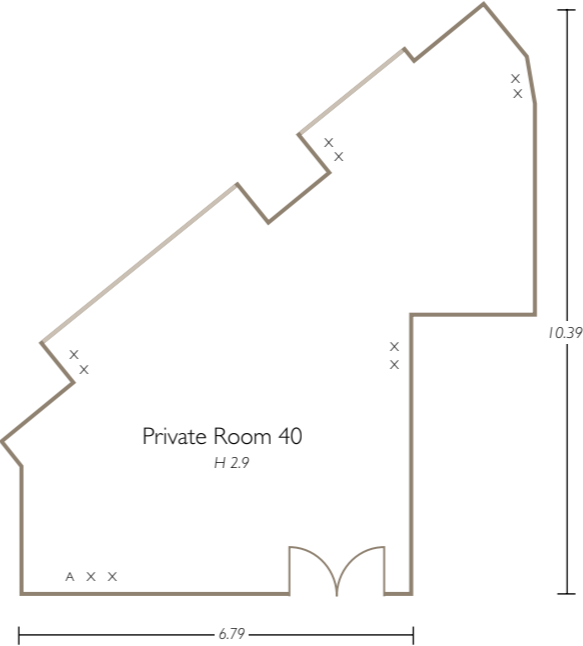
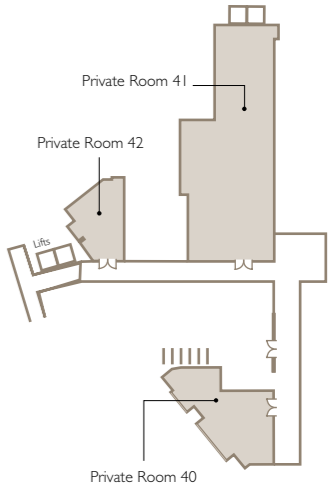
e: [htrwcb@radisson.com](mailto:htrwcb@radisson.com)  
t: +44 (0)20 8757 7903

GUIDELINE  
CAPACITIES



NAME OF ROOM	THEATRE	CLASSROOM	BOARDROOM	U-SHAPE	CABARET	RECEPTION	LUNCH/DINNER
PRIVATE ROOM 40	36	26	20	16	16	20	20
PRIVATE ROOM 41	50	30	25	20	50	50	50
PRIVATE ROOM 42	30	18	20	14	20	30	20

FOURTH FLOOR  
PRIVATE ROOMS 40 – 42



Key
T = Telephone
X = 13 amp socket
A = TV aerial
TS = Data access point

