

THE
EDWARDIAN
MANCHESTER
A RADISSON COLLECTION HOTEL

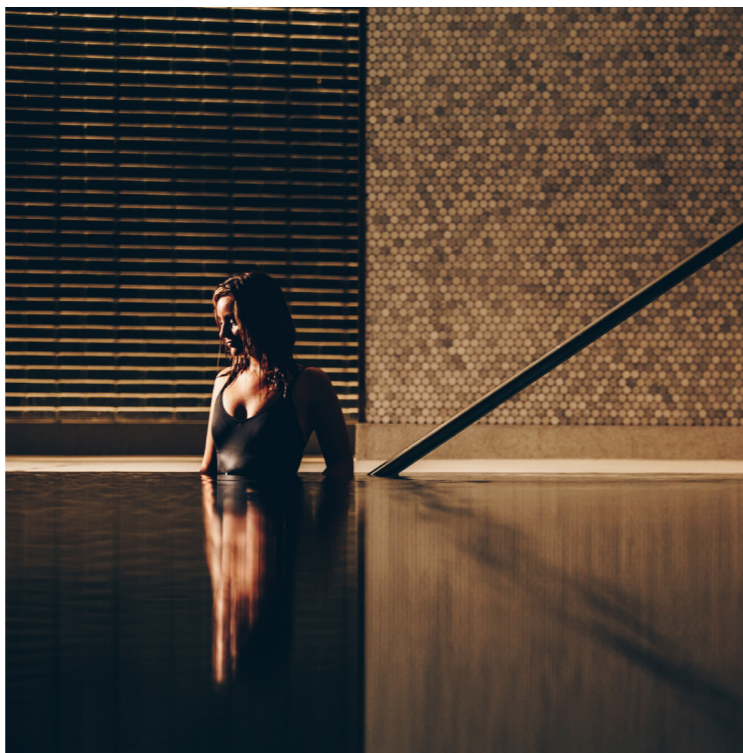
Meetings and Events


Welcome


Set in Manchester's iconic Grade II-listed Free Trade Hall, stylish spaces create a mood of understated luxury just moments from central Manchester.

Following a complete refurbishment, The Edwardian Manchester brings together a collection of individually designed spaces for work and play, including 263 spacious bedrooms, 20 technologically advanced and flexible meeting spaces for up to 500, the peaceful The Library Champagne Bar and the award-winning Peter Street Kitchen.

The state-of-the-art The Spa & Gym allows our guests to restore body and mind, featuring a 12-metre swimming pool and specially designed workout areas.



 Complimentary high-speed Wi-Fi up to 150mbps on an unlimited number of devices

 Edward, our virtual concierge is available to guests and meeting organisers 24/7



All your needs covered

Cutting-edge technology for successful meetings

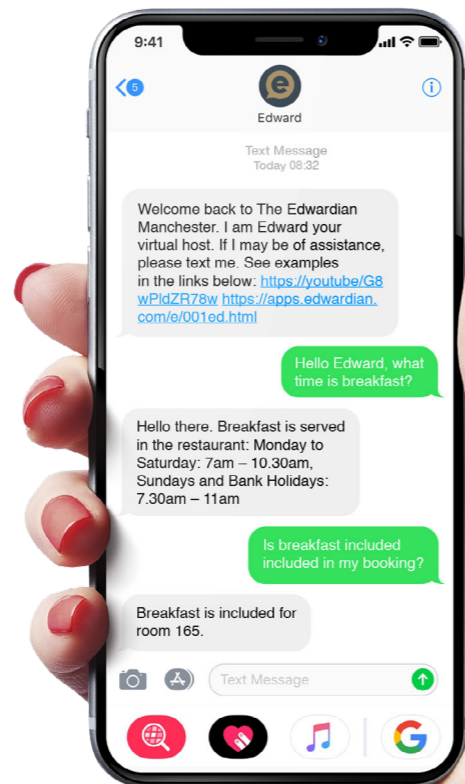
Our large meeting rooms are equipped with Bose sound systems and Panasonic Full HD laser projectors, controlled by the latest Extron touch screen display. For stunning 4K presentations, our boardrooms feature interactive Samsung eBoards with a built-in web browser, interactive whiteboard and full integration with USB and personal laptops.

Meet Edward: Your Dedicated Conference Host

Edward is an innovative and unique chatbot, developed specifically to match the needs of the hospitality industry. He responds to guests' requests via SMS text messaging. Edward is available to all residential guests and organisers at the hotel.

Discover world-class dining in an iconic location

Our food and drink teams are here to ensure you stay energised, motivated and focused, with a range of delicious menus to choose from. We promise to go above and beyond to bring you the very best in innovative and responsible gastronomy.



Capacities



	Theatre	Classroom	Boardroom	U-shape	Cabaret	Reception	Lunch/Dinner
1st Floor							
Private Room 1	–	–	10	–	–	–	8
Private Room 2	–	–	10	–	–	–	8
Private Room 3	–	–	10	–	–	–	8
Private Room 4	80	40	24	24	50	80	60
Private Room 5	26	–	16	–	–	–	16
Private Room 6	–	–	16	–	–	–	16
Private Room 7	26	–	16	–	–	–	16
2nd Floor							
Hallé Suite	400	180	80	90	180	500	280
Private Room 8	120	50	30	30	54	125	80
Private Room 9	60	24	20	–	24	50	30
Private Room 10	60	24	20	–	24	50	30
Private Room 11	120	50	30	30	54	125	80
Hallé Lounge Bar	–	–	–	–	–	180	–
3rd Floor							
Private Room 12	30	20	18	20	18	35	20
Private Room 13	30	20	18	20	18	35	20
Private Room 14	30	16	16	16	18	35	20
Third Floor Foyer	–	–	–	–	–	50	–
4th Floor							
Private Room 15 & 16	80	40	36	30	40	60	60
Private Room 15	30	16	14	12	12	20	20
Private Room 16	50	30	16	18	18	30	30
Private Room 17	50	20	24	18	18	50	30
Private Room 18	50	20	24	18	18	50	30
Private Room 19 & 20	100	50	40	36	60	80	80
Private Room 19	50	26	20	20	24	40	40
Private Room 20	40	18	14	14	12	20	20
Fourth Floor Foyer	–	–	–	–	–	60	–

Floor Dimensions

	Area	Length m (ft)	Width m (ft)	Height m (ft)	Floor	Natural daylight
1st Floor						
Private Room 1	24 m ² (258 ft ²)	6.8 m (22'4")	3.6 m (11'8")	2.1 m (7' 2")	1	✓
Private Room 2	24 m ² (258 ft ²)	6.8 m (22'4")	3.6 m (11'8")	2.1 m (7' 2")	1	✓
Private Room 3	24 m ² (258 ft ²)	6.8 m (22'4")	3.6 m (11'8")	2.1 m (7' 2")	1	✓
Private Room 4	104 m ² (1119 ft ²)	14.4 m (47' 2")	7.4 m (24' 3")	2.19 m (7' 2")	1	✓
Private Room 5	34 m ² (366 ft ²)	7.6 m (24'9")	4.5 m (14'9")	2.1 m (7' 2")	1	✓
Private Room 6	34 m ² (366 ft ²)	7.6 m (24'11")	4.5 m (14'9")	2.1 m (7' 2")	1	✓
Private Room 7	34 m ² (366 ft ²)	7.6 m (24'11")	4.5 m (14'9")	2.1 m (7' 2")	1	✓
2nd Floor						
Hallé Suite	357 m ² (3843 ft ²)	27.5 m (90'3")	13 m (42'8")	3.6 m (11'8")	2	✓
Private Room 8	127 m ² (1367 ft ²)	9.8 m (32'2")	13 m (42'8")	3.6 m (11'8")	2	✓
Private Room 9	62 m ² (667 ft ²)	4.8 m (15'9")	13 m (42'8")	3.6 m (11'8")	2	✓
Private Room 10	62 m ² (667 ft ²)	4.8 m (15'9")	13 m (42'8")	3.6 m (11'8")	2	✓
Private Room 11	105 m ² (1130 ft ²)	8.1 m (26'7")	13 m (42'8")	3.6 m (11'8")	2	✓
Hallé Lounge Bar	113 m ² (1216 ft ²)	7.9 m (25' 11")	15.1 m (49' 6")	2.09 m (6' 10")	2	–
3rd Floor						
Private Room 12	36 m ² (387 ft ²)	8 m (26'3")	4.6 m (15'1")	2.25 m (7'4")	3	✓
Private Room 13	36 m ² (387 ft ²)	8 m (26'3")	4.6 m (15'1")	2.25 m (7'4")	3	✓
Private Room 14	40 m ² (430 ft ²)	6.9 m (22' 7")	5.8 m (19' 1")	2.25 m (7' 4")	3	✓
4th Floor						
Private Room 15 & 16	105 m ² (1130 ft ²)	14 m (45' 11m)	7.7 m (25' 3")	2.25 m (7' 4")	4	–
Private Room 15	45 m ² (484 ft ²)	5.8 m (19' 1")	7.7 m (25' 3")	2.25 m (7' 4")	4	–
Private Room 16	60 m ² (645 ft ²)	7.5 m (24' 7")	7.7 m (25' 3")	2.25 m (7' 4")	4	–
Private Room 17	52 m ² (559 ft ²)	5.5 m (18')	9.4 m (30' 10")	2.25 m (7' 4")	4	–
Private Room 18	53 m ² (570 ft ²)	5.5 m (18')	9.6 m (31' 5")	2.25 m (7' 4")	4	–
Private Room 19 & 20	118 m ² (1270 ft ²)	16.3 m (53' 5")	9.2 m (30' 2")	2.25 m (7' 4")	4	✓
Private Room 19	66 m ² (710 ft ²)	7.8 m (25' 7 ")	9.6 m (31' 5")	2.25 m (7' 4")	4	–
Private Room 20	52 m ² (559 ft ²)	5.8 m (19' 1")	9.2 m (30' 2")	2.25 m (7' 4")	4	✓





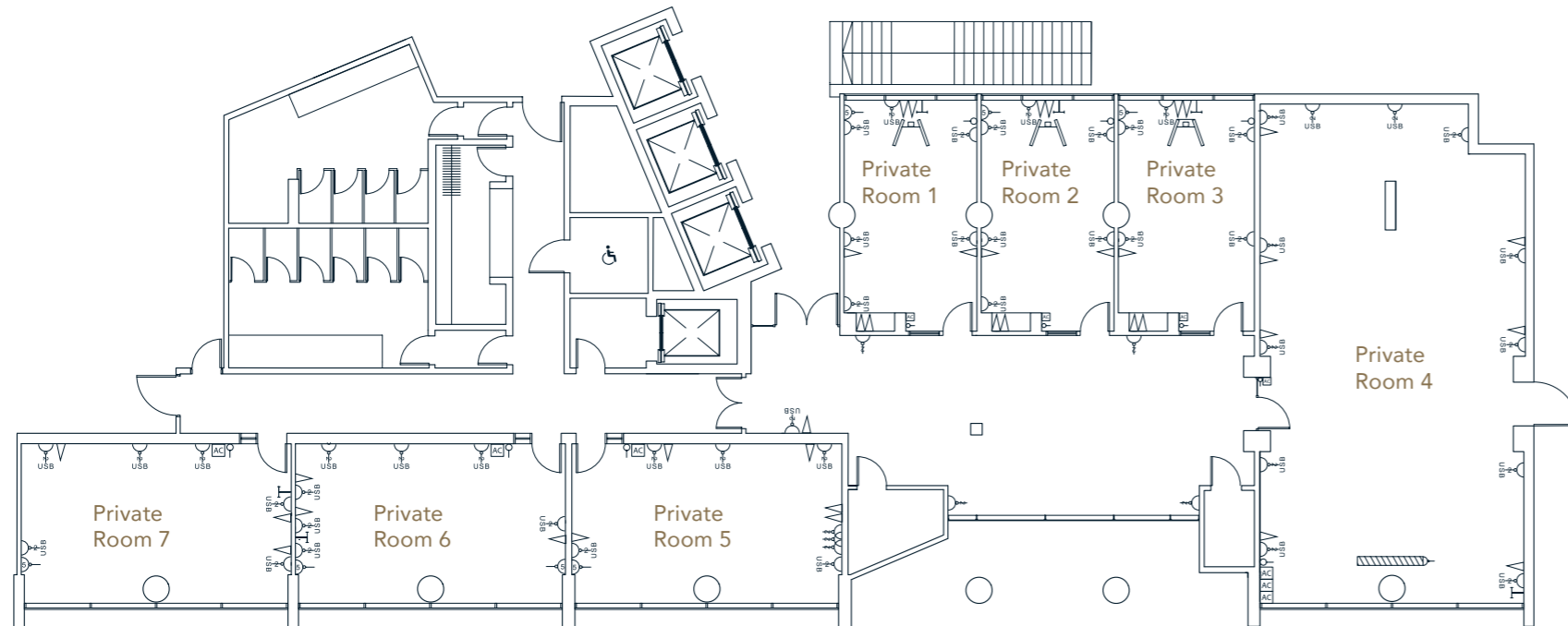
First Floor

All meeting rooms are fully air conditioned and benefit from:

- Complimentary, fast Wi-Fi up to 150Mbps
- Dedicated audio-visual support
- Built-in AV
- Bespoke staging and additional lighting on request

Key

- | | | | |
|---|---------------------------------|---|--------------------------------|
|  | Single Switched Socket |  | AV Socket |
|  | Double Switched Socket |  | TV Coaxial Input |
|  | Double Switched Socket with USB |  | Light control |
|  | 1 gang / 2 modules RJ45 |  | Air conditioning Control Panel |
|  | 2 gang / 4 modules RJ45 |  | Screen |
|  | Single Switched Socket 5 amp | | |

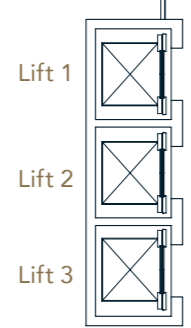
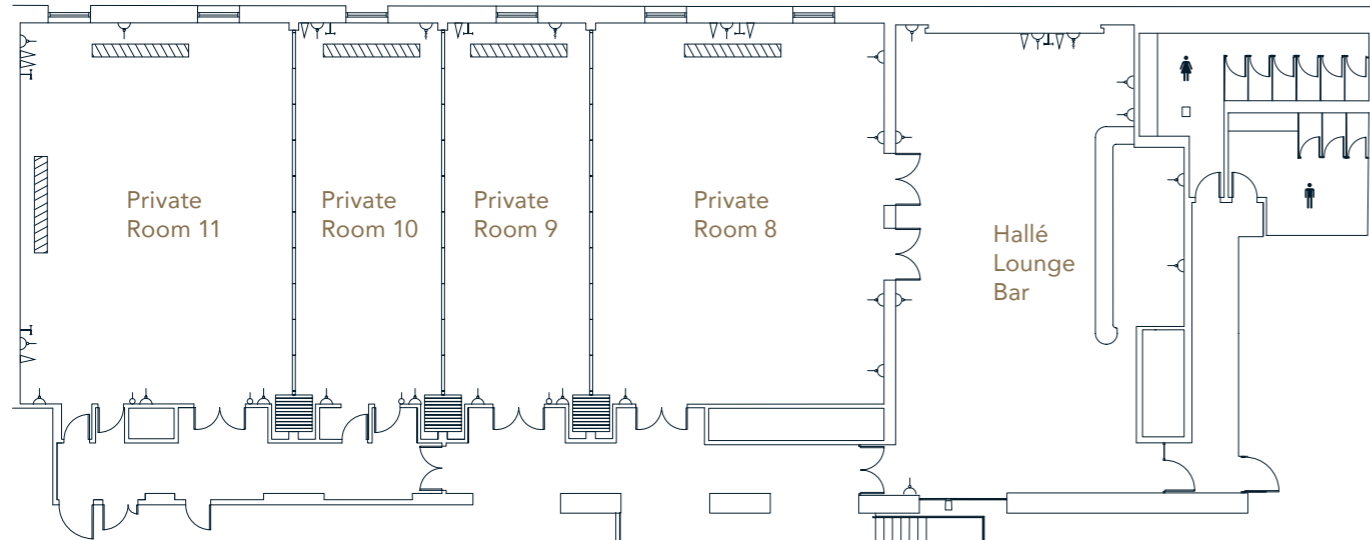


Private Room 2



Private Room 4

Second Floor - Hallé Suite



- Key**
- Single Switched Socket
 - Double Switched Socket
 - Double Switched Socket with USB
 - 1 gang / 2 modules RJ45
 - 2 gang / 4 modules RJ45
 - Single Switched Socket 5 amp
 - AV Socket
 - TV Coaxial Input
 - Light control
 - Air conditioning Control Panel
 - Screen

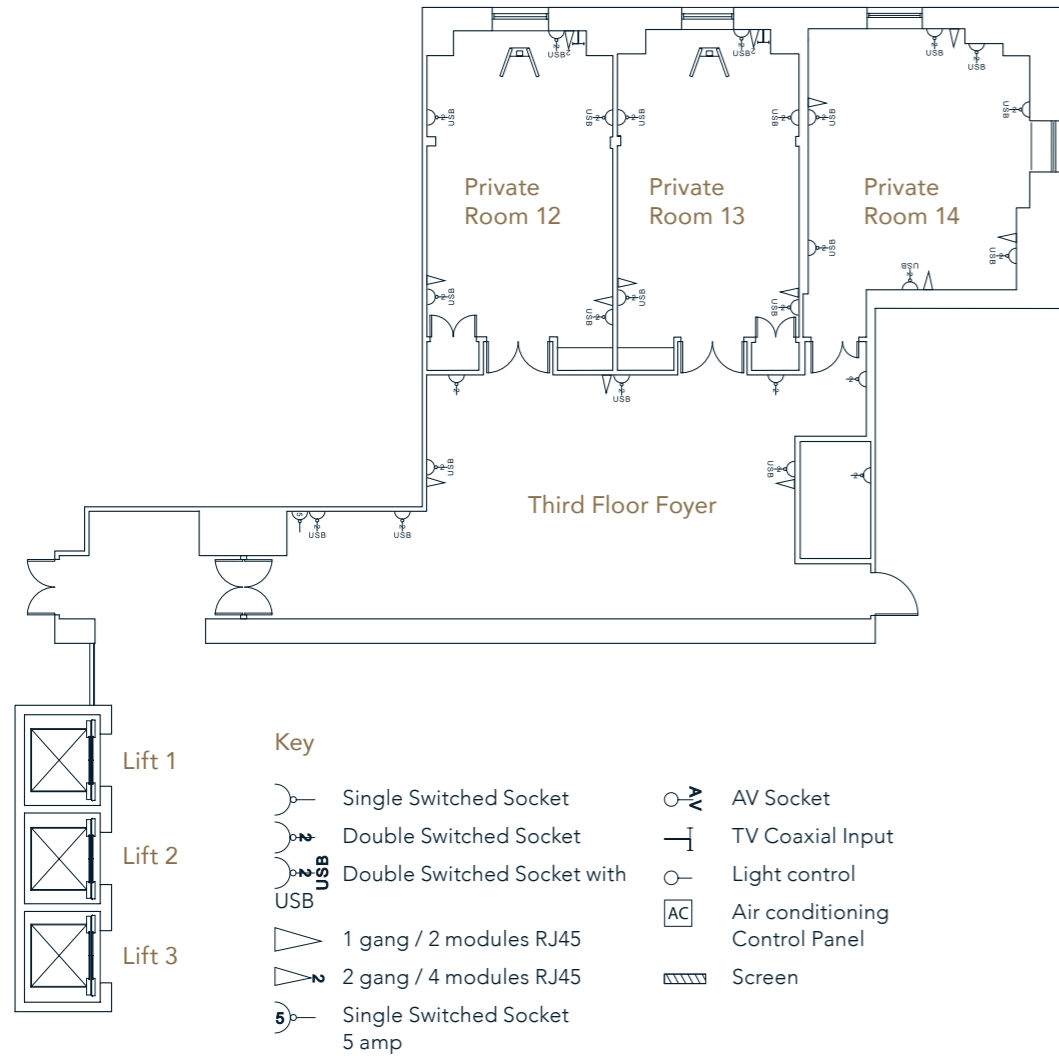


Hallé Suite

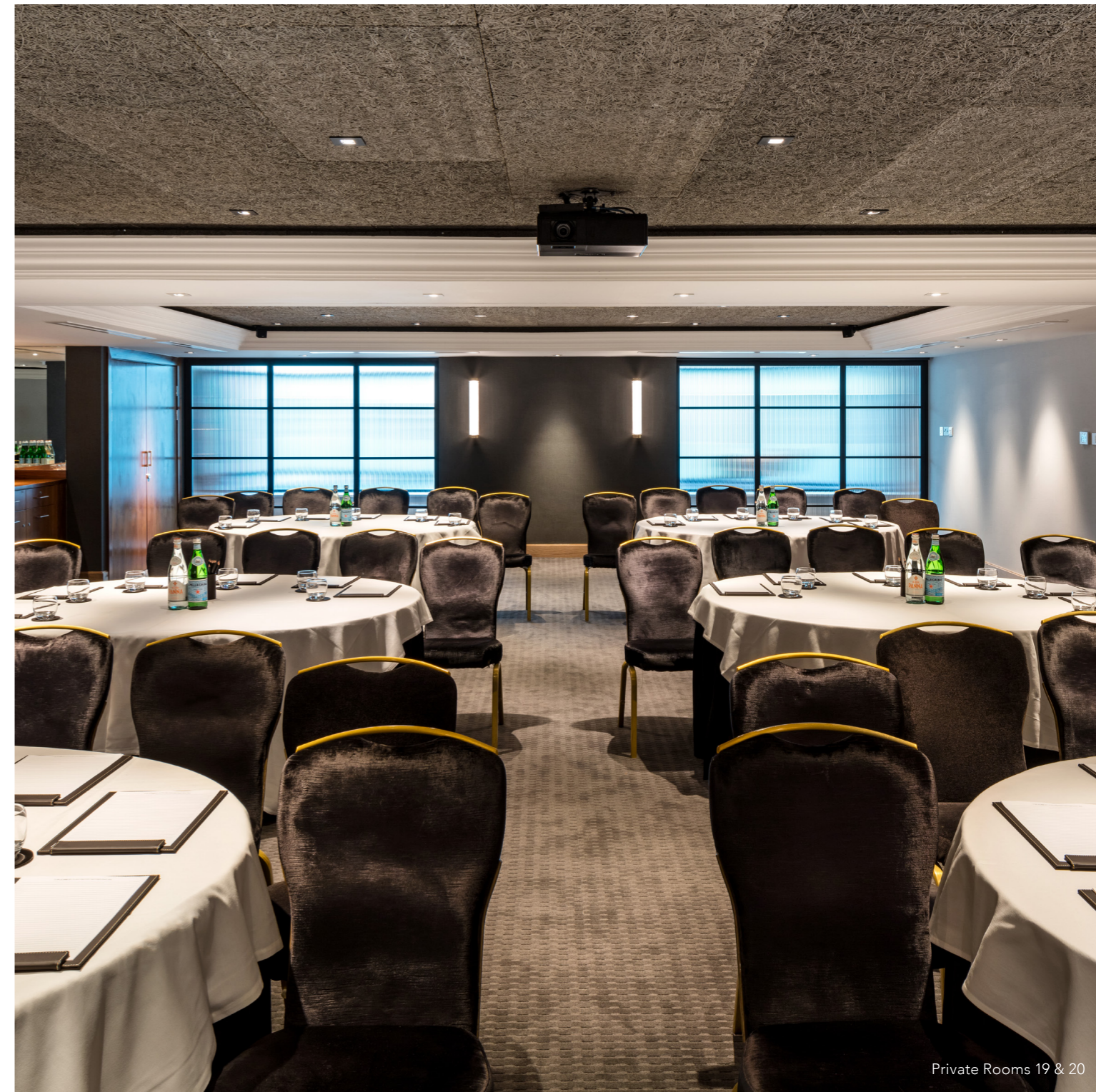
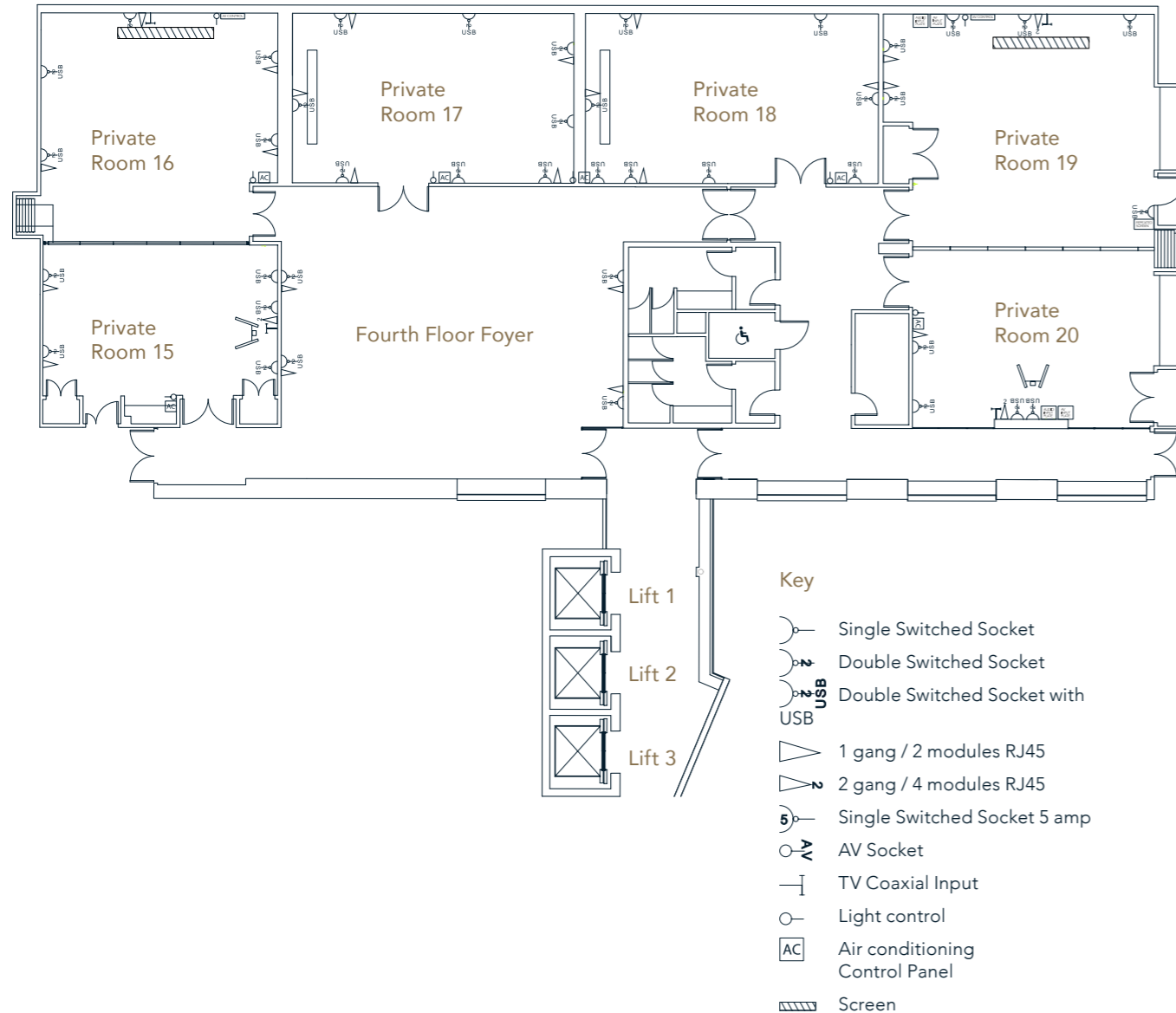


Hallé Lounge Bar

Third Floor



Fourth Floor



Location

Peter Street

Placed right next to Manchester's Central Convention Centre on Peter Street, the Free Trade Hall is a ten-minute walk from Deansgate station, a two-minute walk from St Peter's Square metro stop and a short drive from Manchester International airport.

Manchester ★★★★★

Free Trade Hall
Peter Street
Manchester
M2 5GP

T +44 (0)161 835 8933
F +44 (0)161 835 9979
E events@edwardian.com

Travel

Car Park
NCP Great Northern Warehouse,
1 Watson Street, Manchester M3 4EE

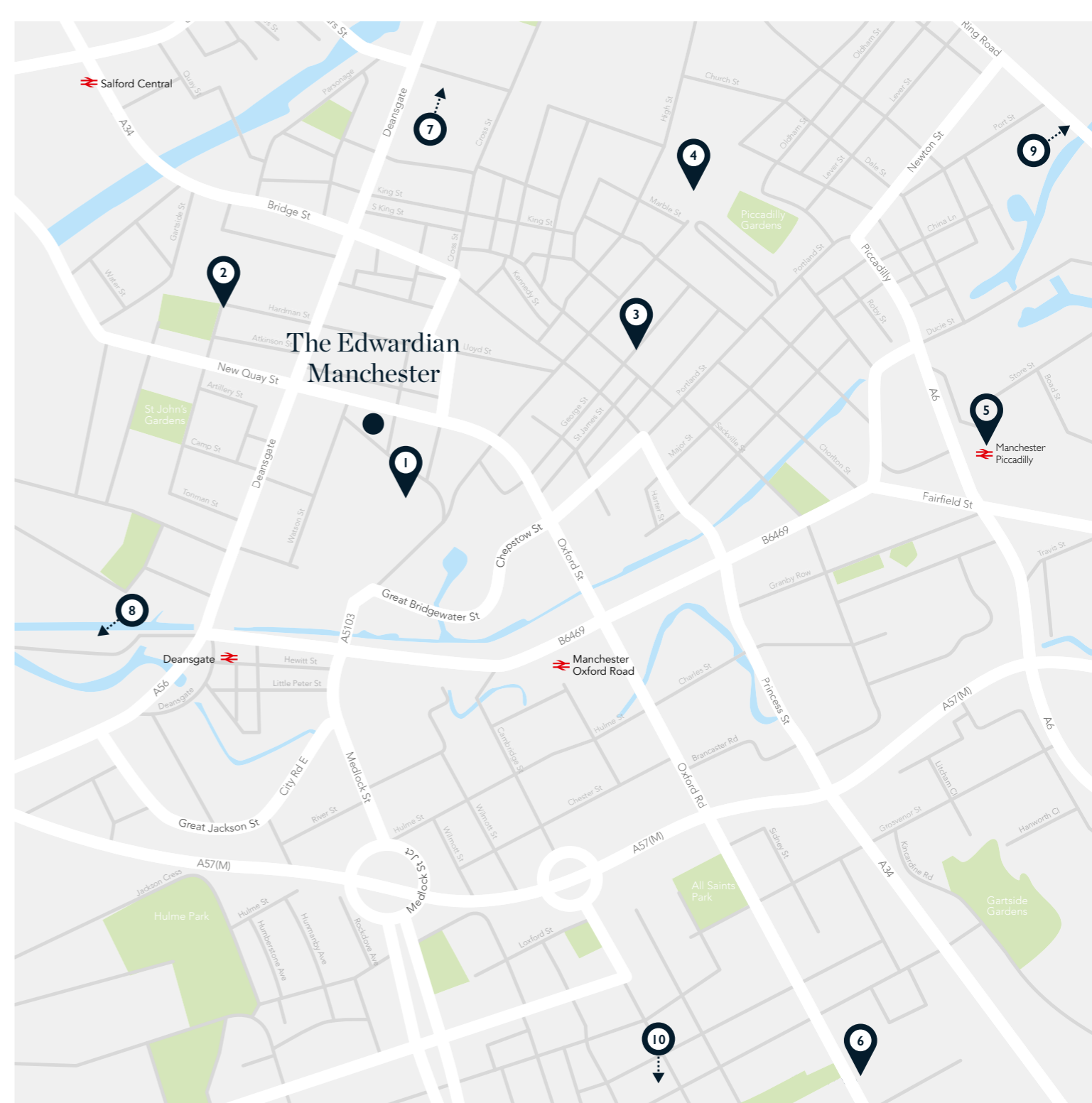
Metrolink
St Peter's Square

Trains
Manchester Piccadilly (1 mile)
Manchester Victoria (1 mile)

Airport
Manchester (10 miles)

Points of Interest

- 1 Manchester Central (2 mins walk)
- 2 Spinningfields - business district, high end shops, bars and restaurants (5 mins walk)
- 3 Chinatown (7 mins walk)
- 4 Shopping - Market Street (8 mins walk)
- 5 Manchester Piccadilly train station (15 mins walk)
- 6 Universities (20 mins walk)
- 7 Manchester Arena (10 mins by taxi)
- 8 Manchester United (10 mins by taxi)
- 9 Manchester City (10 mins by taxi)
- 10 Manchester Airport (25 mins by taxi)



The Edwardian Manchester ★★★★★

Free Trade Hall, Peter Street, Manchester, M2 5GP

+44 (0)161 835 9929

resmanc@edwardian.com

theedwardianmanchester.com