

Expertise in Entertainment


EDWARDIAN
HOTELS
LONDON

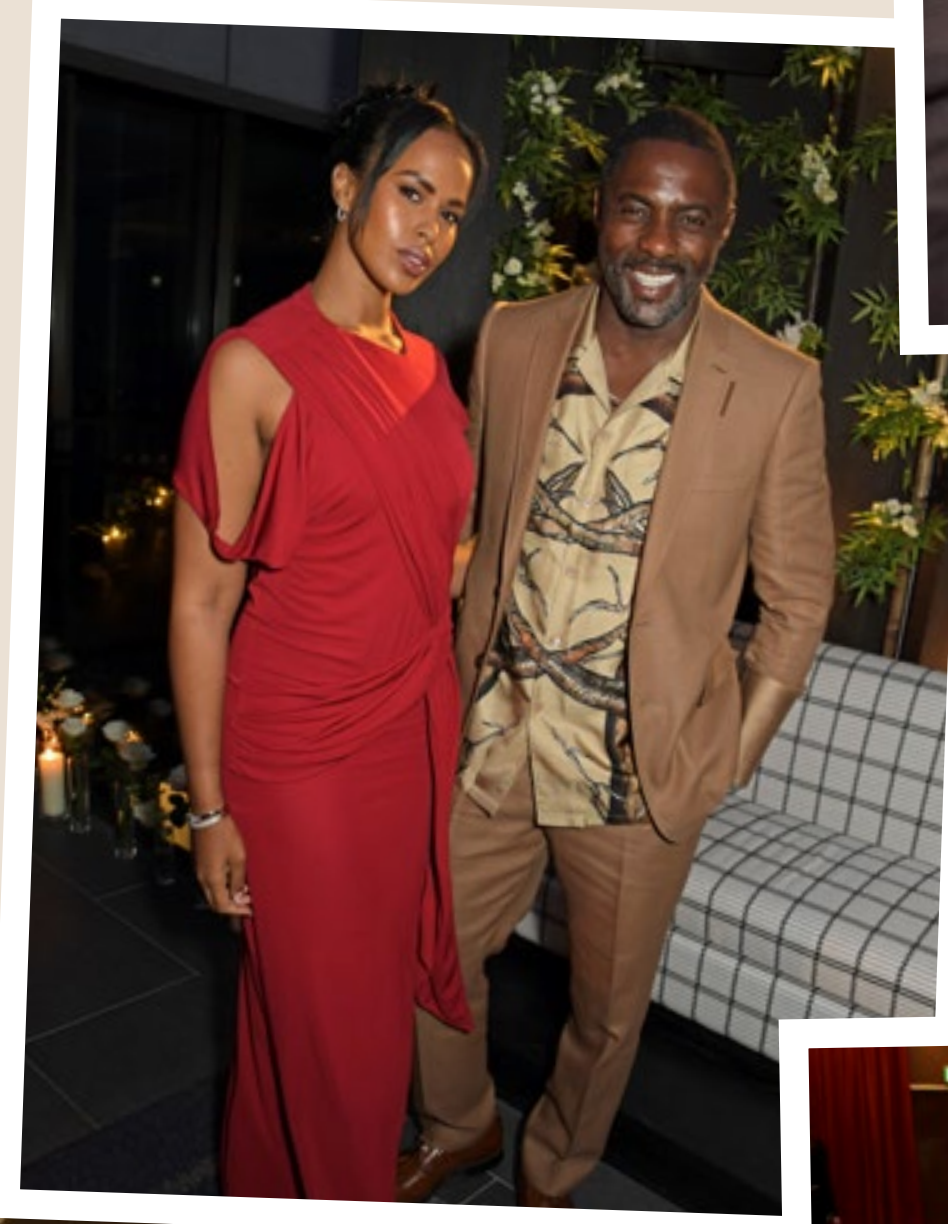

THE LONDONER
LEICESTER SQ.

THE MAY FAIR
HOTEL

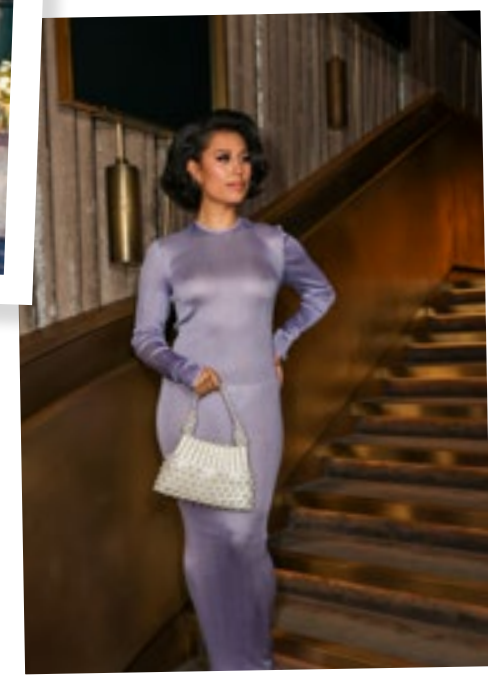
THE
EDWARDIAN
MANCHESTER

We've welcomed some of the world's most recognised names from film, television and the wider entertainment industry...

Providing privacy, discretion, and consistency, we can adapt quickly to the fast-paced demands of press and production.



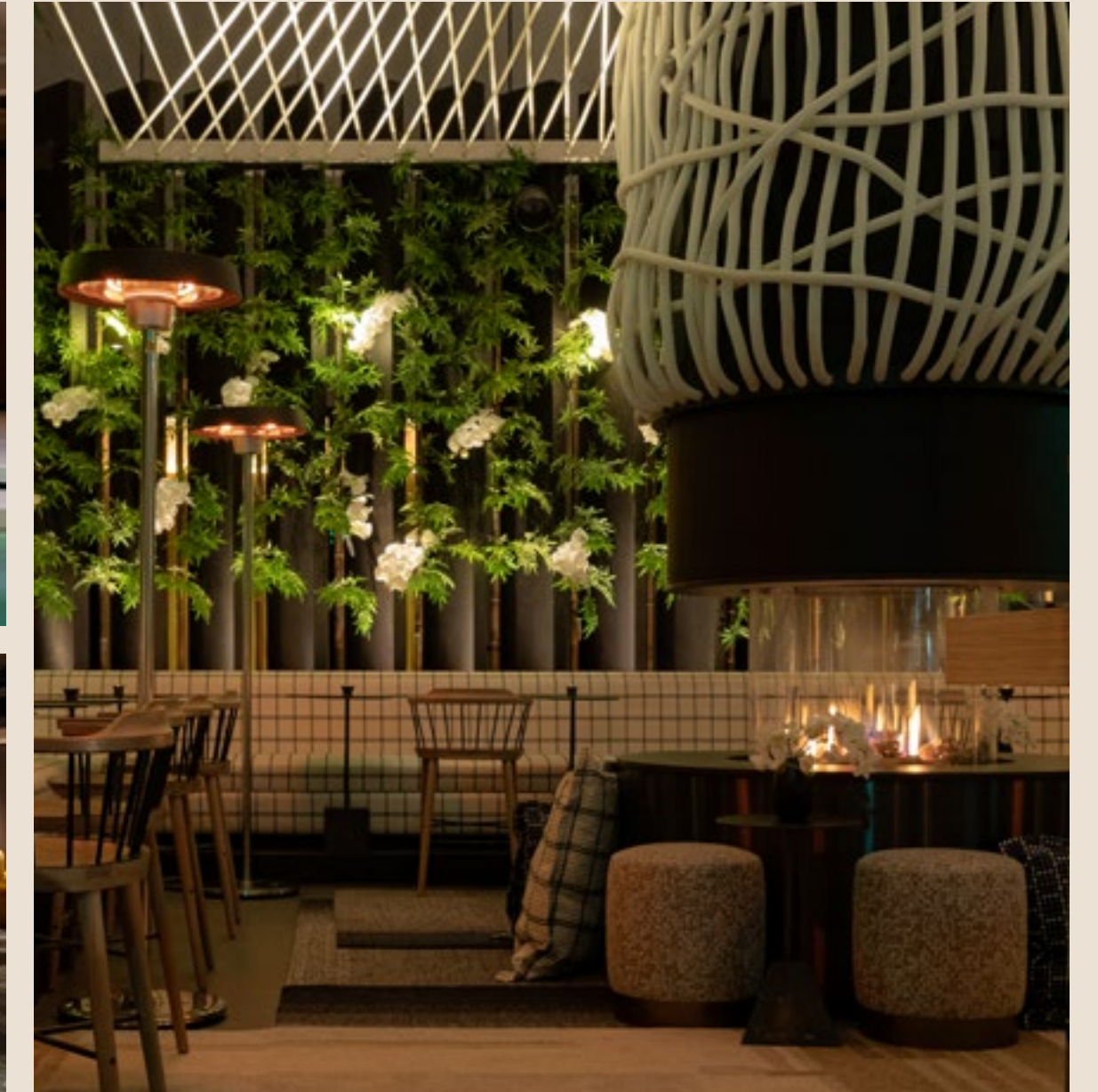
A trusted partner for press tours, talent stays and production-led events.



Experienced teams are ready to support talent, screenings, premieres, junkets, and crew events.

Credits: Critics Circle 2026, Vogue x Tiffany Launch 2021 images by photographer Dave Benett. Ballroom image by Rachel Takes Pictures.

The Londoner



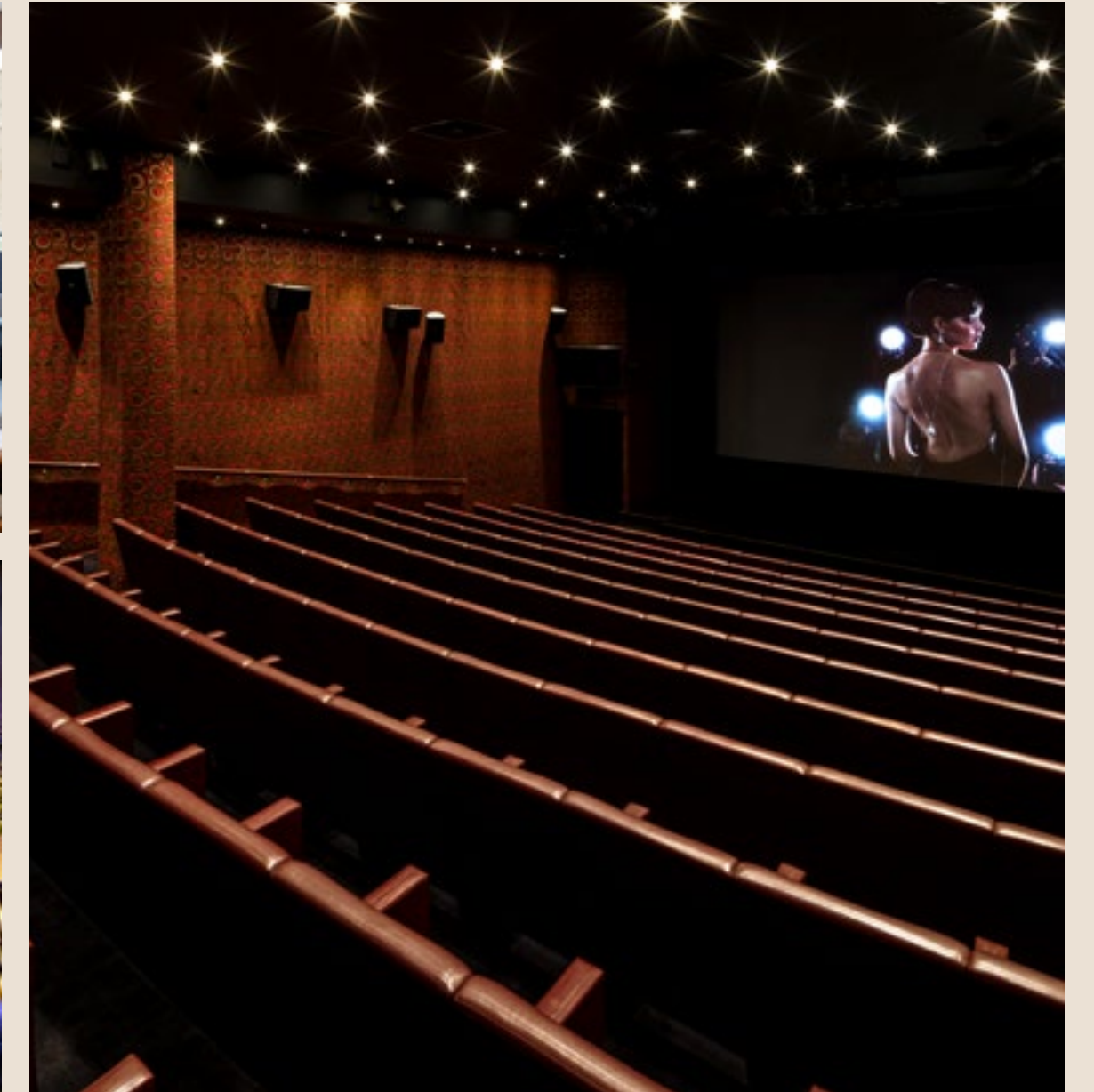
STATEMENT IN THE SPOTLIGHT

Set on Leicester Square, in the heart of London's West End and world film premieres, The Londoner was made for the stage. Across 16 storeys, the hotel offers a series of self-contained floors, ideally suited to premium, seamless junket experiences and press activity.

In Brief

- 350 guest rooms, incl. 36 suites
- 6 restaurants & bars
- Junket capabilities
- Green rooms
- 11 event spaces
- Pre drinks and after party spaces
- Valet parking
- Private talent entrance
- Odeon Luxe screening rooms
- Spa with pool & gym
- Complimentary Wi-Fi

The May Fair



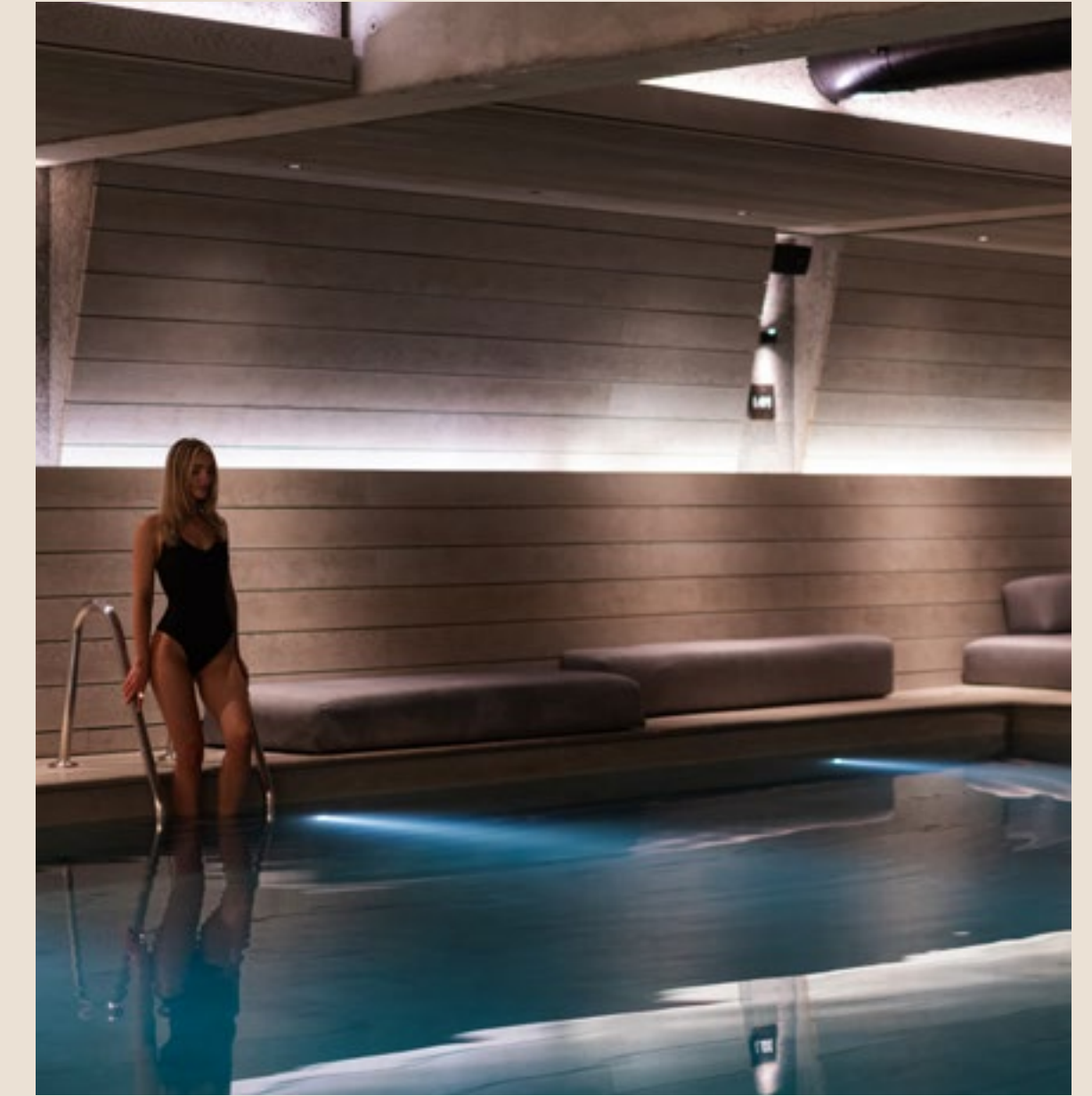
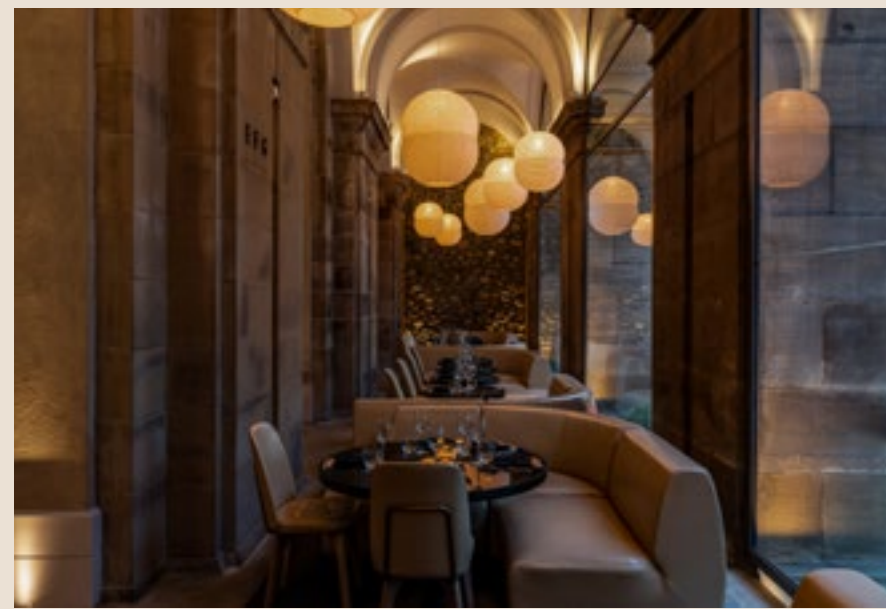
A STARLET OF HOLLYWOOD GLAMOUR

Since 1927, The May Fair has been a preferred address for star-studded occasions across the entertainment world. With timeless design and newly refreshed bedrooms, public areas and event spaces, the hotel combines heritage, experience and versatility at one of London's most prestigious locations.

In Brief

- 406 guest rooms, incl. 37 suites
- 2 restaurants & bars
- Junket capabilities
- Green rooms
- 16 event spaces
- Pre drinks and after party spaces
- Valet parking
- Private talent entrance
- Private screening room
- Spa with gym
- Complimentary Wi-Fi

The Edwardian Manchester



ICON OF THE ARTS

Housed within the beautifully restored Free Trade Hall, once an iconic stage for musical performances, The Edwardian Manchester offers an oasis of calm and luxury in the heart of the city. The hotel features 20 versatile event spaces in a variety of configurations, suitable for press events, screenings and production activity.

In Brief

- 263 guest rooms, incl. 24 suites
- 2 restaurants & bars
- Green rooms
- 20 event spaces
- Pre drinks and after party spaces
- Private talent entrance
- Valet parking
- On-site coach parking
- Spa with pool & gym
- Complimentary Wi-Fi

Hotel Features

The Londoner Leicester Square ★★★★★

38 Leicester Square, London WC2H 7DX



The May Fair Mayfair ★★★★★

Stratton Street, London W1J 8LT



The Edwardian Manchester Free Trade Hall, Manchester ★★★★★

Peter Street, Manchester M2 5GP



Rooms	350	406	263
Suites	36	37	24
Food & Beverage Outlets	Whitcomb's The Stage Champagne Bar 8 at The Londoner The Residence Joshua's Tavern	May Fair Kitchen The May Fair Bar May Fair Terrace	Peter Street Kitchen The Library Champagne Bar
Junket Hotel	✓	✓	–
Green Rooms	✓	✓	✓
Complimentary Wi-Fi 150Mbps	✓	✓	✓
Number Of Event Spaces	11	16	20
Valet Parking	✓	✓	✓
On Site Coach Parking	on request	on request	✓
Gym	✓	✓	✓
Spa	✓	✓	✓
Pool	✓	–	✓
Talent Private Entrance	✓	✓	Escort Only

**On Site
Entertainment Contact:**

Sam Dowell Gagnan
Sales Manager - Entertainment
T +44 771 788 0303
E dowell.gagnan@edwardian.com

**North America
Entertainment Contacts:**

Declan Lott
Vice President – Sales
T +1 212 254 2220
E declan.lott@edwardian.com

Robyn Sessa
VIP Special Services Manager
T +1 212 932 1550
E robyn.sessa@edwardian.com

**Asia Pacific
Entertainment Contact:**

Sarah Whitty
Director of Sales, Asia Pacific
T +1 3 9597 0119
E sarah.whitty@edwardian.com