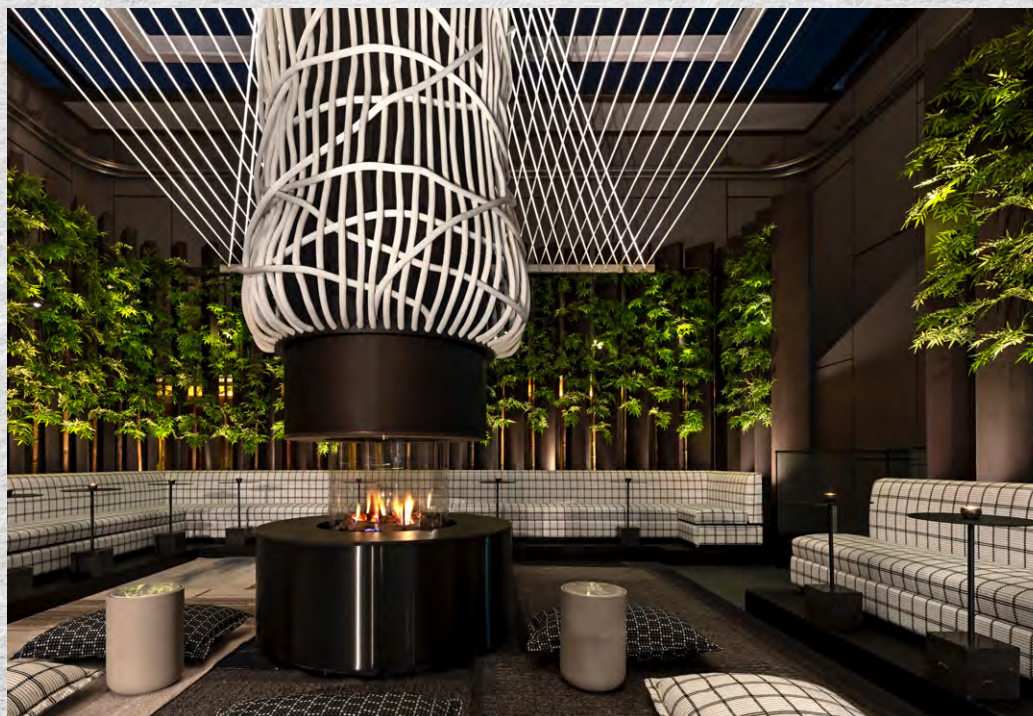


8  
AT THE LONDONER

Set across the eighth floor, this rooftop bar features a terrace with spectacular skyline views, a breathtaking Shima garden with a retractable roof, and a modern Japanese menu.



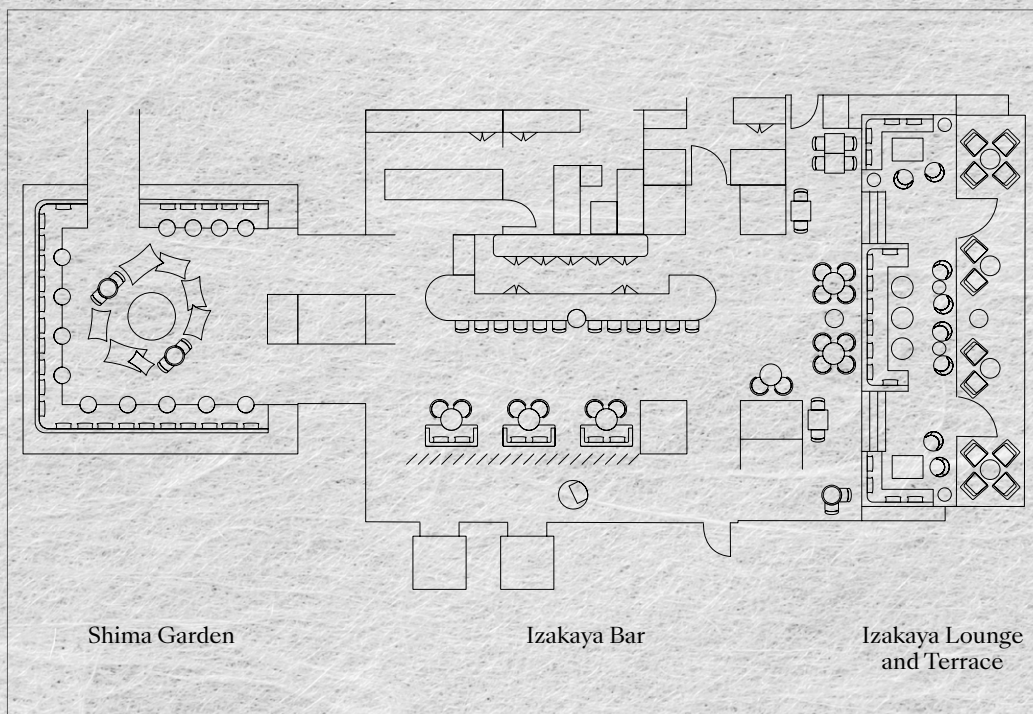
#### Standing reception

- Up to 180 (exclusive hire)
- Up to 45 (Shima Garden only)

#### Seated dining experience

- Up to 54

Email: [groupsdining@thelondoner.com](mailto:groupsdining@thelondoner.com)



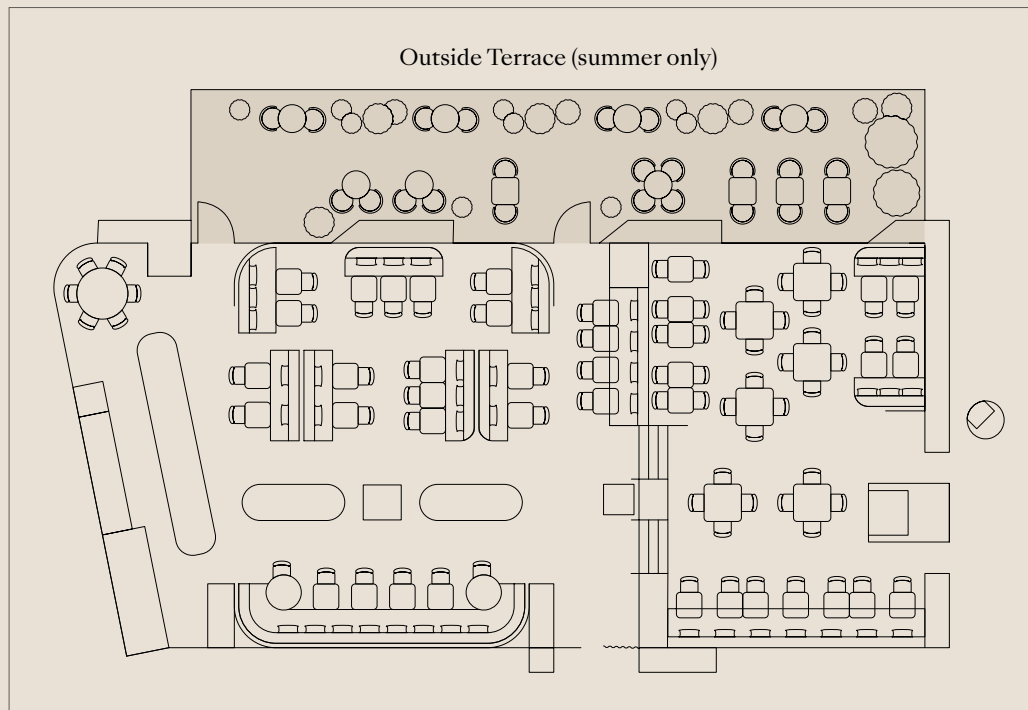


# Whitcomb's

Natural light, modern art, and urban elegance characterise this French Mediterranean restaurant, offering a relaxed atmosphere for special occasions.



- 120 seated dining experience (round tables, exclusive hire)
- 200 standing reception (exclusive hire)
- 60 seated dining experience (semi-private hire)
- 30 seated dining experience on the outside terrace (exclusive hire)
- 60 standing reception on the outside terrace (exclusive hire)



Email: [groupsdining@thelondoner.com](mailto:groupsdining@thelondoner.com)





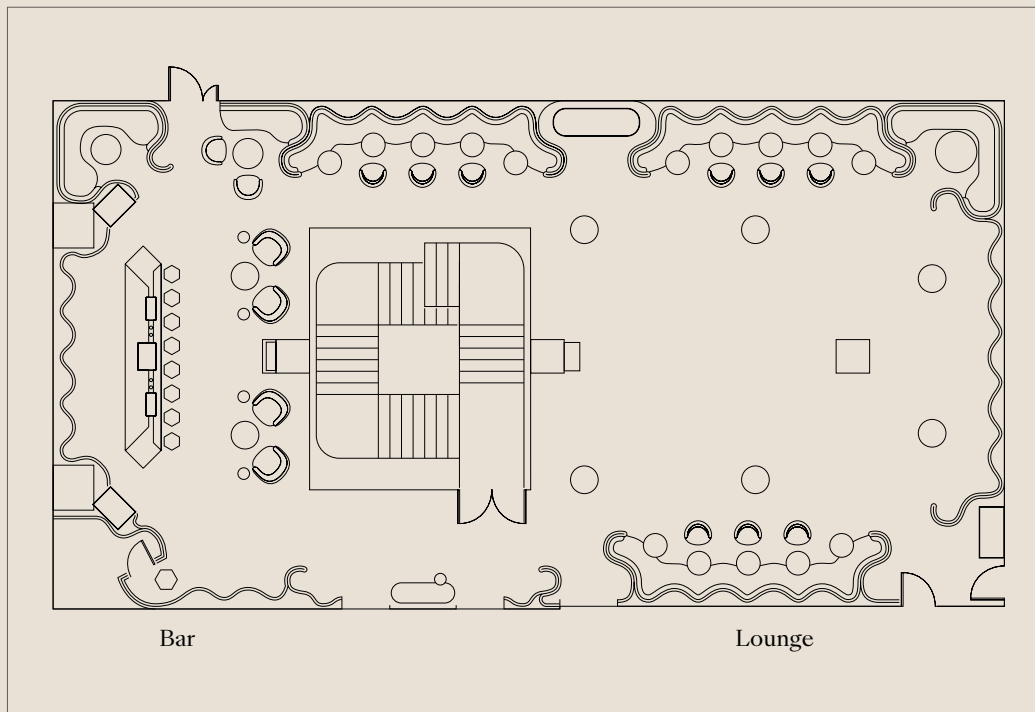
## The Green Room

A stylish, self-contained soirée room featuring a dining area, a dancefloor, a private bar, and a private kitchen for a complete event experience.



- 28 single dining table experience
- 82 seated dining experience (exclusive hire, separate tables)
- 150 standing reception (exclusive hire)

Email: [events@thelondoner.com](mailto:events@thelondoner.com)





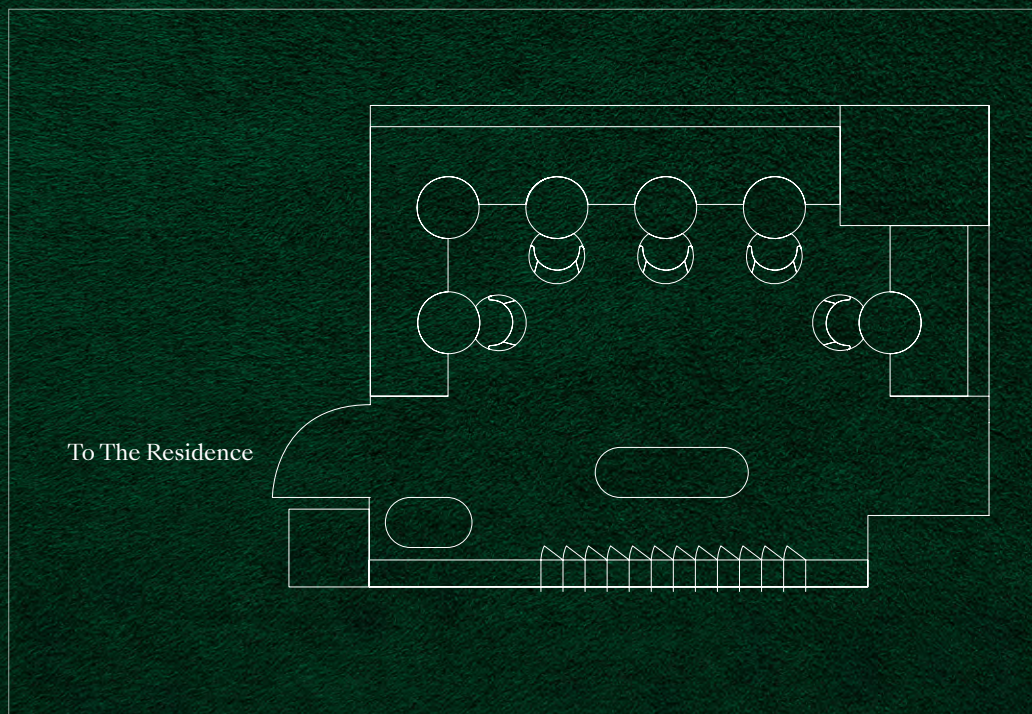


## The Whisky Room

*Accessed through a hidden door, this plush speakeasy-style space is designed for VIP receptions and whisky tastings, featuring over 50 rare and renowned whiskies.*

- 14 seated/standing experience  
(exclusive hire)

Email: [groupsdining@thelondoner.com](mailto:groupsdining@thelondoner.com)



Visit Website

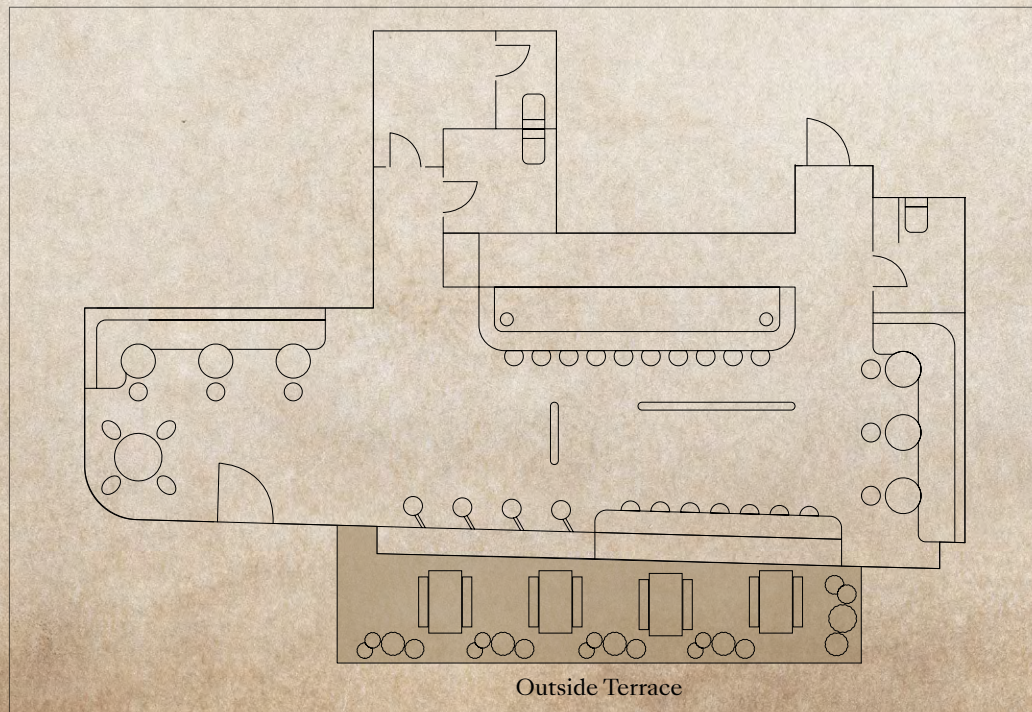


# JOSHUA'S TAVERN

*A cosy neighbourhood gin bar adorned with brass and copper details, hand-painted murals, and an inviting outdoor terrace, perfect for relaxed occasions.*

- 25 standing reception (semi-private hire)
- 60 standing reception (exclusive hire)
- 30 outside terrace

Email: [groupsdining@thelondoner.com](mailto:groupsdining@thelondoner.com)





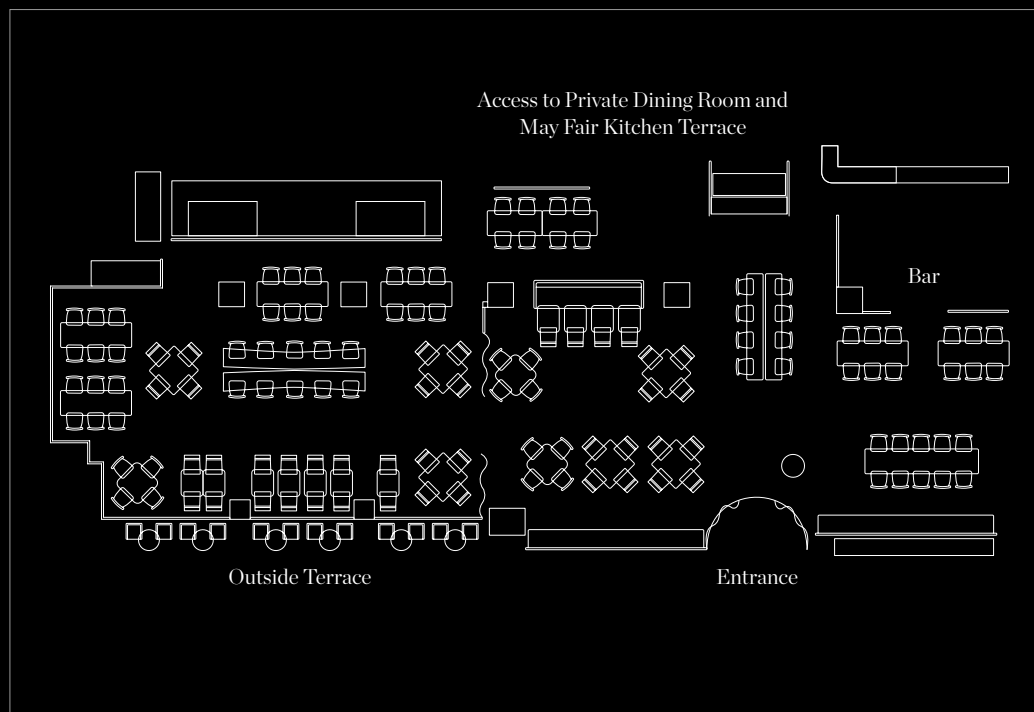
# May Fair Kitchen

A modern, sophisticated restaurant nestled in London's Mayfair, offering a unique Japanese izakaya and Italian dining experience.



- 12 chef's table
- 120 seated dining experience  
(exclusive hire)
- 200 standing reception  
(exclusive hire)
- 50 seated dining experience  
(semi-private hire)
- 60 standing reception  
(semi-private hire)

**Email:** [groupsdining@mayfairkitchen.co.uk](mailto:groupsdining@mayfairkitchen.co.uk)





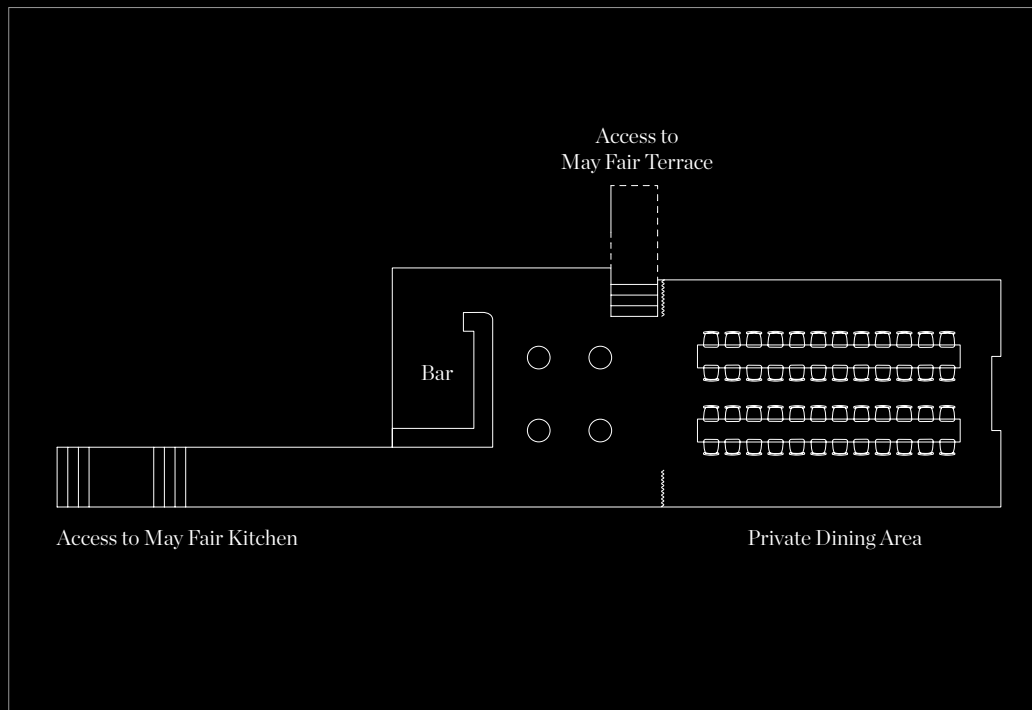
# May Fair Private Dining Room

Tucked away inside the hotel, this dramatic space features dark wood panelling and a striking green marble fireplace, specially designed for private dining experiences and receptions.



- **Up to 30 seated dining experience**  
(long table, exclusive hire)
- **Up to 40 seated dining experience**  
(parallel long tables, exclusive hire)
- **Up to 60 seated dining experience**  
(round tables, exclusive hire)
- **Up to 80 standing reception**  
(exclusive hire)

**Email:** [groupsdining@mayfairkitchen.co.uk](mailto:groupsdining@mayfairkitchen.co.uk)





# May Fair Terrace

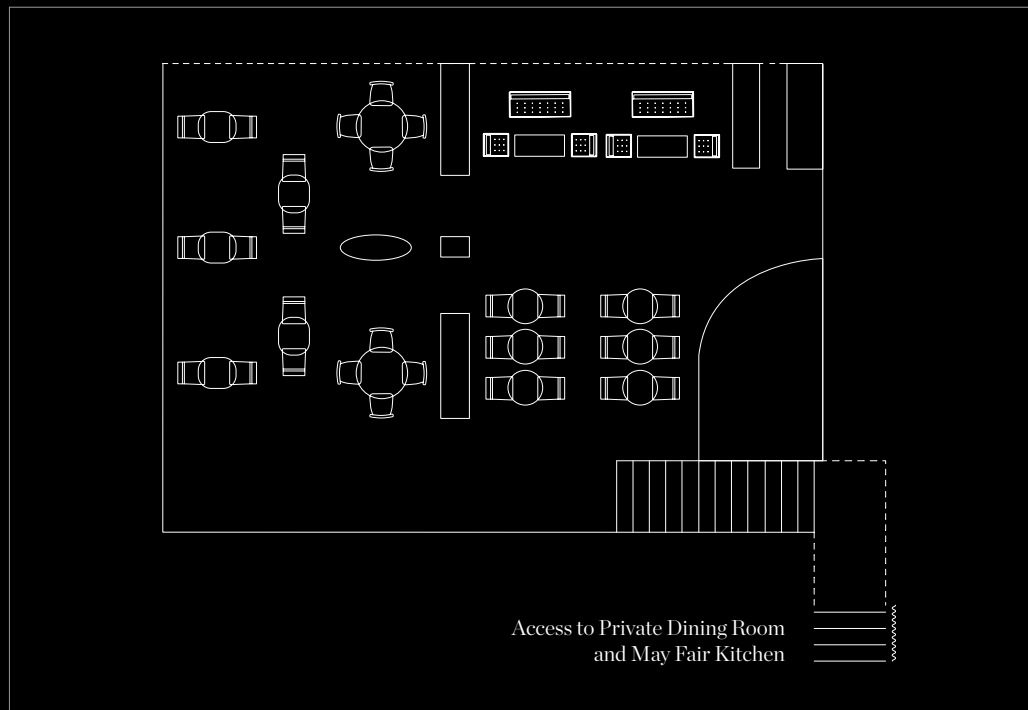
Mayfair's best-kept secret: a fully secluded, heated terrace designed for private occasions from day to night, offering a versatile space that also serves as a designated smoking area.



**- 30 seated dining experience**  
(exclusive hire)

**- 60 standing reception**  
(exclusive hire)

**Email:** [groupsdining@mayfairkitchen.co.uk](mailto:groupsdining@mayfairkitchen.co.uk)





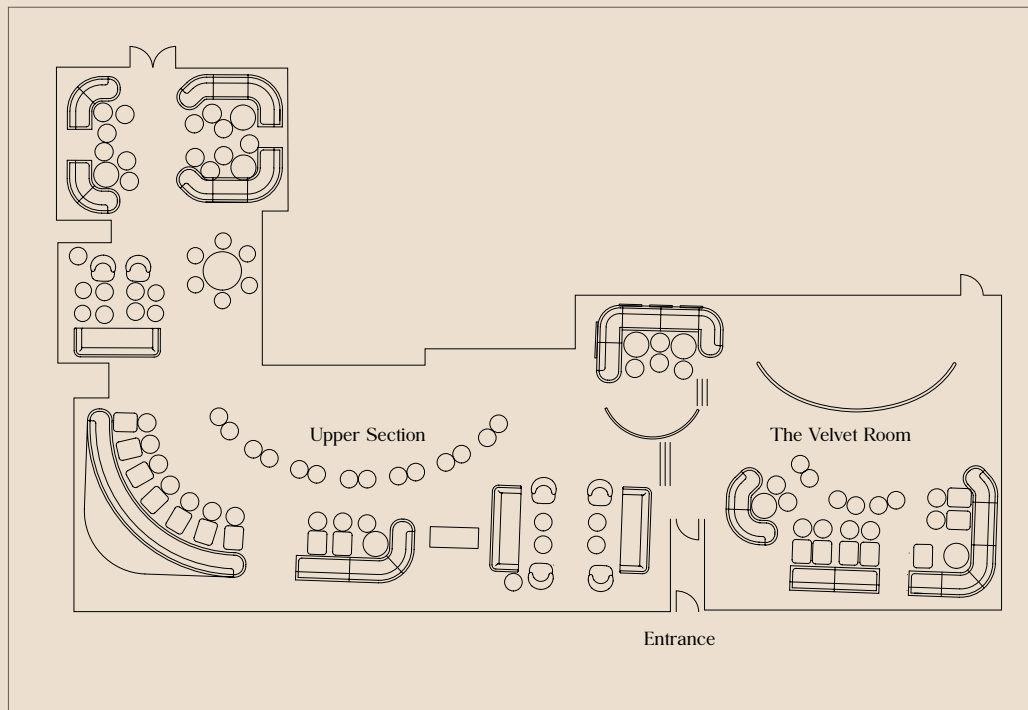
# THE MAY FAIR BAR

Party in a private booth, hire an intimate corner or book the entire bar for a celebration to remember in a chic, modern setting.



- 200 standing reception  
(exclusive hire)
- 50 standing reception  
(lower section, semi-private hire)
- 14 seated dining experience  
(private booth experience)

Email: [events@themayfairbar.co.uk](mailto:events@themayfairbar.co.uk)



Visit Website



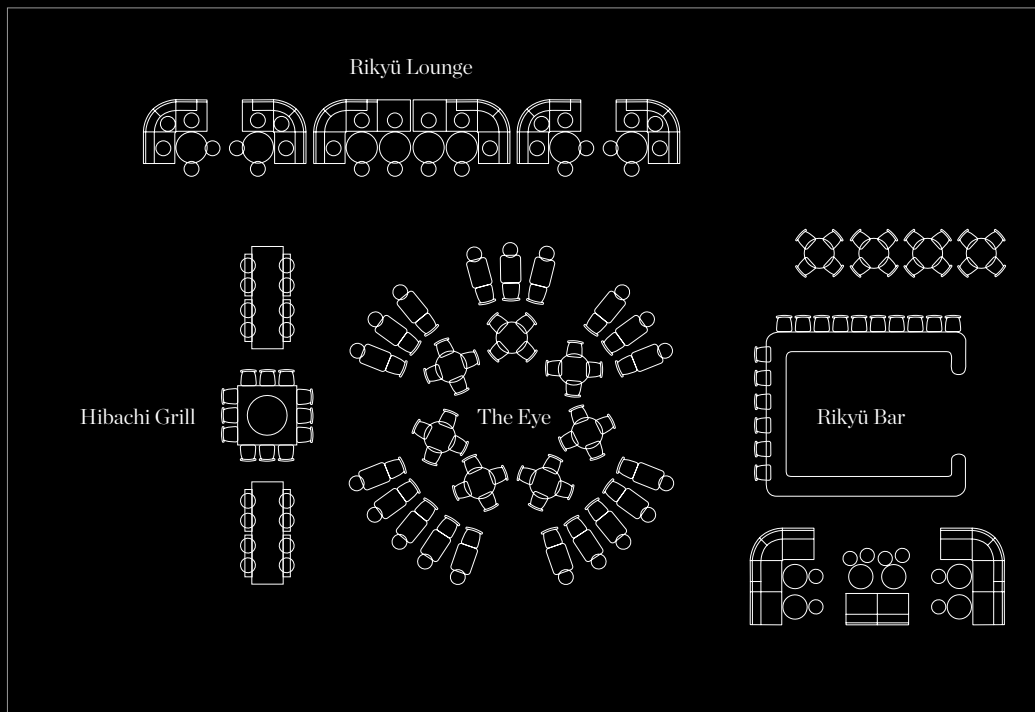
# Peter Street Kitchen

Characterised by dramatic high ceilings and arches of the former Free Trade Hall, this Japanese and Mexican restaurant blends modernist design with natural wooden features.



- **130 seated dining experience**  
(exclusive hire)
- **250 standing reception**  
(exclusive hire)
- **30 seated dining experience**  
(under the arches, semi-private hire)
- **30 standing reception**  
(at the entrance by the Rikyū bar, semi-private hire)
- **12 seated Hibachi experience**

**Email:** [groupsdining@peterstreetkitchen.co.uk](mailto:groupsdining@peterstreetkitchen.co.uk)



Visit Website



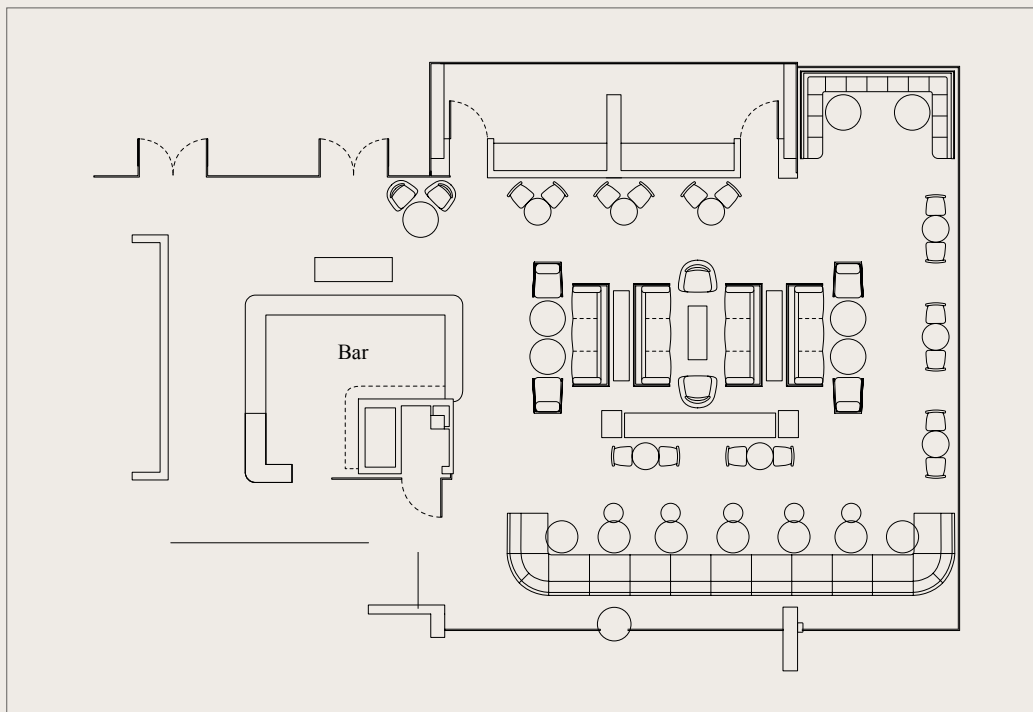
# THE LIBRARY CHAMPAGNE BAR

*An elegant, relaxed setting surrounded by beautiful Assouline books and original art, available to hire for private celebrations.*



- 30 seated dining experience  
(long tables, exclusive hire)
- 50 seated dining experience  
(round tables, exclusive hire)
- 100 standing reception  
(exclusive hire)

Email: [groupsdining@peterstreetkitchen.co.uk](mailto:groupsdining@peterstreetkitchen.co.uk)



Visit Website