



Radisson **BLU**  
EDWARDIAN, BLOOMSBURY ST

MEETINGS AND EVENTS



## MEET IN STYLE

Discover meeting and event spaces that inspire. Refurbished to a premium standard and designed in the style of a modern London townhouse, Radisson Blu Edwardian Bloomsbury Street is an excellent choice for the discerning planner.

## FROM 20 TO 230

**Bloomsbury Street's versatile spaces can host meetings and events of all kinds.**

Business functions, weddings, private dinners, hen parties and book launches - regardless of your plans, our experienced planners are on hand to help.

The hotel's largest and most impressive room is The Folio Suite, featuring stunning bay windows, a private bar and optional partitions.



## TAKE A BREAK

Adjacent to The Folio Suite is The Drawing Room, a residential and intimate space to relax.

Whether you need a pre-function room, a breakout space or somewhere for guests to enjoy some quiet time, The Drawing Room exudes the calm and charm of a modern townhouse.





# BE OUR GUEST

Set in the heart of Bloomsbury, Bloomsbury Street Kitchen is the perfect place to host an intimate private dinner with Mediterranean and Japanese cuisine...

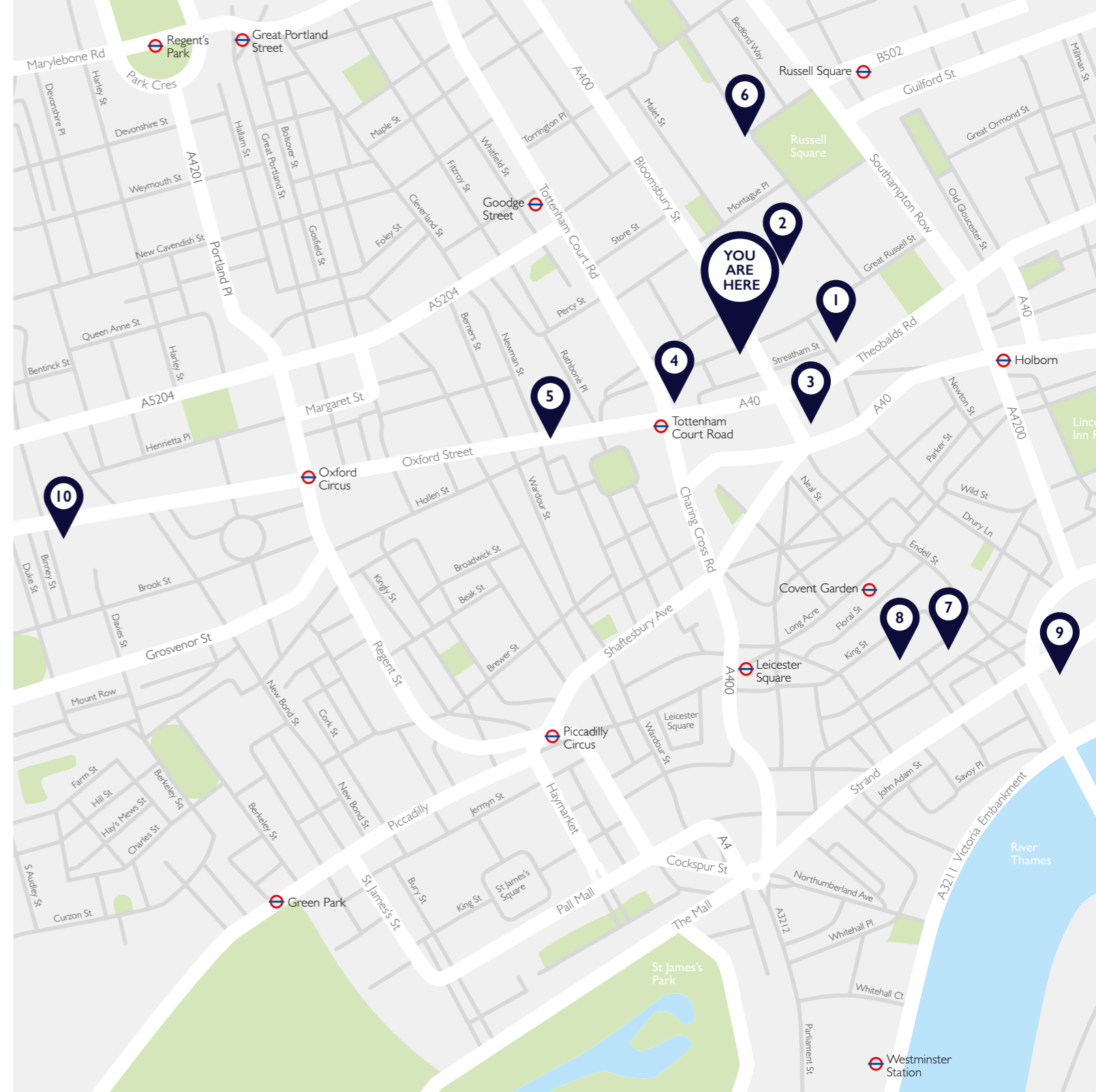


# PARTY PEOPLE

...or the ideal stage to transform your launch party  
or company event to something unforgettable.

# YOU ARE HERE

Set in a prime location 50 metres from the British Museum, this hotel sits in the heart of the West End with Oxford Street, Covent Garden and Soho all on the doorstep. Close by, Tottenham Court Road and Holborn tube stations provide direct access to the City.



RADISSON BLU EDWARDIAN,  
BLOOMSBURY ST ★★★★★ (deluxe)

9-13 Bloomsbury Street  
London, WC1B 3QD

T +44 (0)20 7666 2322  
E bshcb@edwardian.com

## TRAVEL

**Car Park**  
Bloomsbury Square

**Airport**  
City Airport (9 miles)  
Heathrow (18 miles)  
Gatwick (28 miles)  
Luton (35 miles)  
Stansted (37 miles)

**Trains**  
Euston (1 mile)  
King's Cross St. Pancras  
Eurostar (1.7 miles)

**Underground**  
Tottenham Court Road  
(Elizabeth, Central and Northern Lines)

## POINTS OF INTEREST

- |   |                                 |
|---|---------------------------------|
| 1 The Cartoon Museum (1 min walk)           | 8 Covent Garden (12 mins walk)  |
| 2 British Museum (1 min walk)               | 9 Somerset House (15 mins walk) |
| 3 The Shaftesbury Theatre (1 min walk)      | 10 Bond Street (20 mins walk)   |
| 4 Dominion Theatre (4 mins walk)            |                                 |
| 5 Oxford Street (5 mins walk)               |                                 |
| 6 Literary Tour of Bloomsbury (8 mins walk) |                                 |
| 7 London Transport Museum (10 mins walk)    |                                 |

# GROUND FLOOR

## CAPACITY

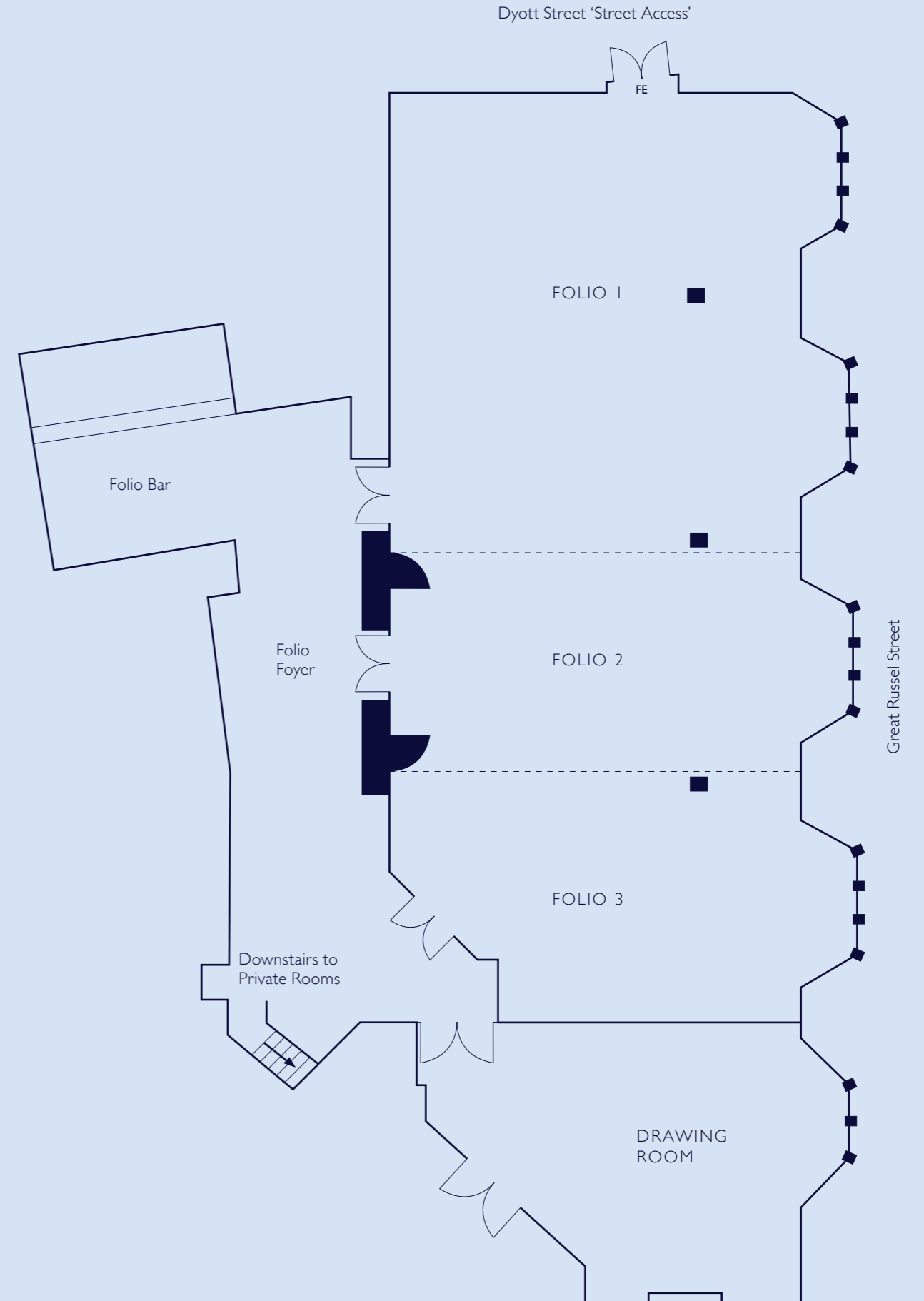
	Theatre	Classroom	Boardroom	U-shape	Cabaret	Reception	Lunch/Dinner	Dinner Dance
Folio Room	230	120	50	60	120	350	220	200
Folio 1 and 2	150	90	50	40	75	240	150	140
Folio 2 and 3	140	60	36	35	60	150	100	120
Folio 1	120	52	28	30	42	150	100	80
Folio 2	60	32	24	24	24	75	50	–
Folio 3	50	24	22	18	24	70	40	–

## FLOOR DIMENSIONS

	Area	Length (ft)	Width (ft)	Height (ft)
Folio Room	232 m <sup>2</sup> (2497 ft <sup>2</sup> )	23.2 m (76.1)	10 m (32.8)	2.9 m (9.5)
Folio 1 and 2	170 m <sup>2</sup> (1830 ft <sup>2</sup> )	17 m (55.8)	10 m (32.8)	2.9 m (9.5)
Folio 2 and 3	115 m <sup>2</sup> (1238 ft <sup>2</sup> )	11.5 m (37.7)	10 m (32.8)	2.9 m (9.5)
Folio 1	117 m <sup>2</sup> (1259 ft <sup>2</sup> )	11.7 m (38.4)	10 m (32.8)	2.9 m (9.5)
Folio 2	53 m <sup>2</sup> (570 ft <sup>2</sup> )	5.3 m (17.4)	10 m (32.8)	2.9 m (9.5)
Folio 3	62 m <sup>2</sup> (667 ft <sup>2</sup> )	6.2 m (20.3)	10 m (32.8)	2.9 m (9.5)

All meeting rooms are fully air conditioned and benefit from:

- Complimentary Wi-Fi up to 150Mbps
- Dedicated audio-visual support
- LCD projection screens
- Business centre with printing facilities
- Audio visual equipment, bespoke staging and additional lighting on request.





# LOWER GROUND FLOOR

## CAPACITY

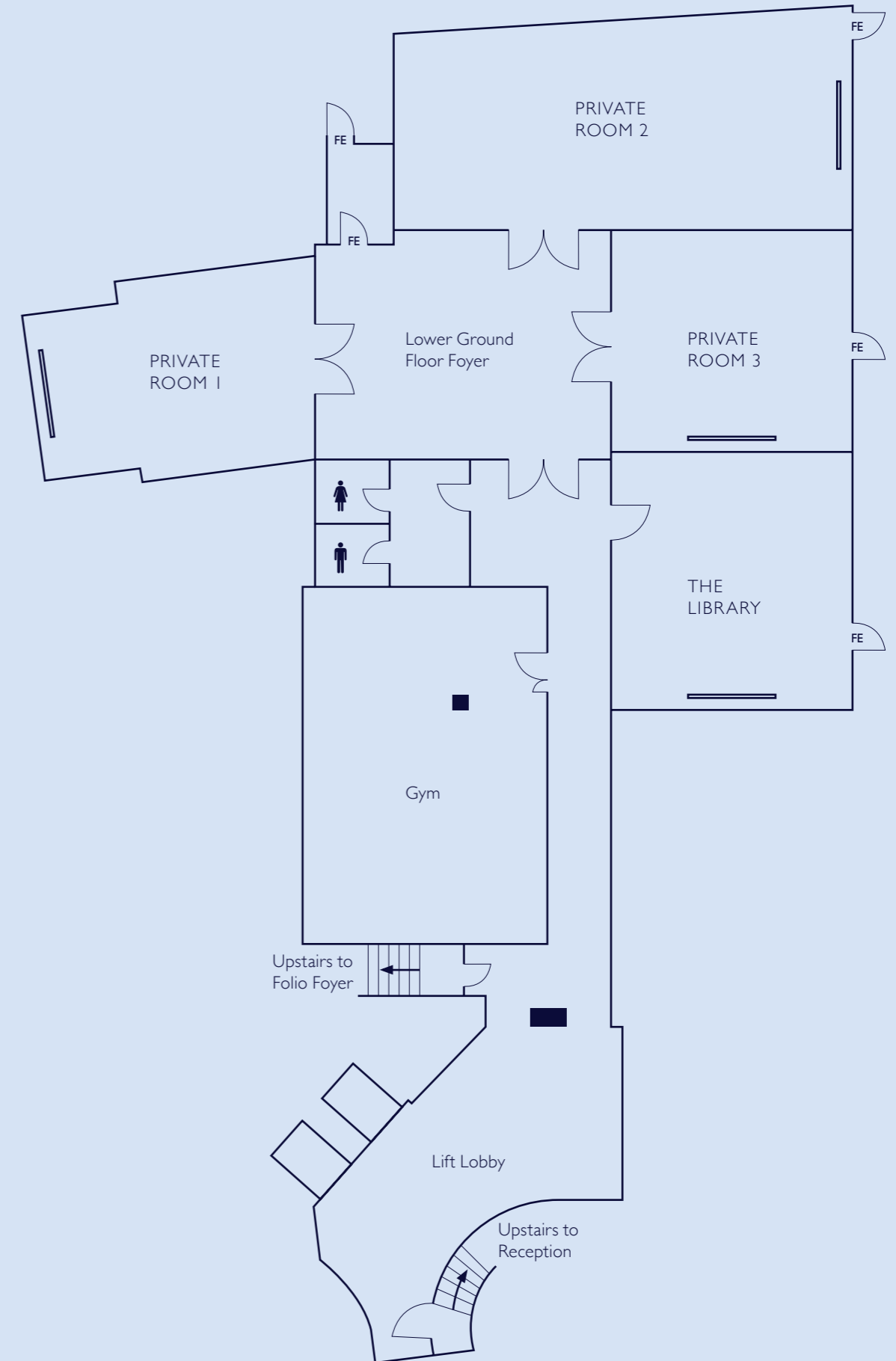
	Theatre	Classroom	Boardroom	U-shape	Cabaret	Reception	Lunch/Dinner	Dinner Dance
Private Room 1	34	16	15	16	16	35	20	–
Private Room 2	60	28	30	32	48	60	50	40
Private Room 3	28	16	15	16	16	30	20	–
The Library	30	12	12	16	16	30	20	–

## FLOOR DIMENSIONS

	Area	Length (ft)	Width (ft)	Height (ft)
Private Room 1	40.5 m <sup>2</sup> (436 ft <sup>2</sup> )	7.5 m (24.6)	5.4 m (17.7)	2.4 m (7.9)
Private Room 2	59.5 m <sup>2</sup> (640 ft <sup>2</sup> )	11.9 m (39)	5 m (16.4)	2.4 m (7.9)
Private Room 3	31.92 m <sup>2</sup> (344 ft <sup>2</sup> )	5.7 m (18.7)	5.6 m (18.4)	2.4 m (7.9)
The Library	30.25 m <sup>2</sup> (326 ft <sup>2</sup> )	5.5 m (18)	5.5 m (18)	2.4 m (7.9)

### All meeting rooms are fully air conditioned and benefit from:

- Complimentary Wi-Fi up to 150Mbps
- Dedicated audio-visual support
- LCD projection screens
- Business centre with printing facilities
- Audio visual equipment, bespoke staging and additional lighting on request.





RADISSON BLU EDWARDIAN,  
BLOOMSBURY ST ★★★★★ (deluxe)

9-13 Bloomsbury Street  
London, WC1B 3QD

**T** +44 (0)20 7666 2322

**E** [bshcb@edwardian.com](mailto:bshcb@edwardian.com)

**W** [radissonblu-edwardian.com/bloomsburystreet](http://radissonblu-edwardian.com/bloomsburystreet)

Owned and managed by Edwardian Hotels London