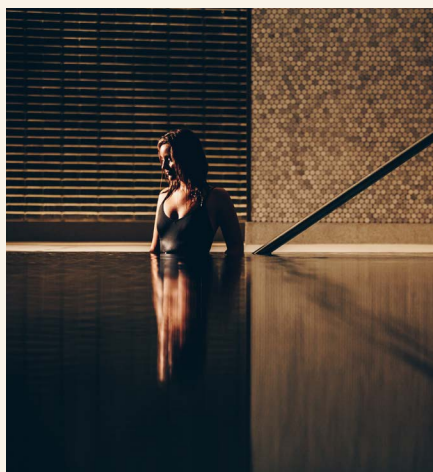
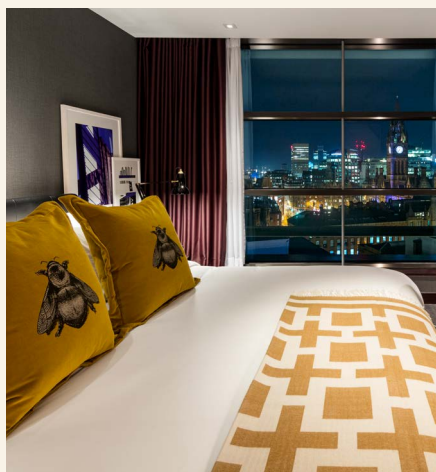




ICONIC STYLE *Meets Modern Luxe*

Exclusive Group Offer

Set in the heart of Spinningfields, Manchester's thriving business district, The Edwardian Manchester offers an exceptional setting for group stays, meetings and corporate events. With a 7,000 sq ft spa and gym sanctuary, award-winning dining and elegant spaces designed for both work and relaxation, the hotel provides a seamless base for productive and rewarding group travel.



Rates start from £169 and include

- Commission and VAT
- One complimentary night for every 20 rooms per night 1 in 20 rooms non-cumulative
- Late check-out until 3pm for the organiser
- Complimentary latest generation Wi-Fi 6
- Access to The Spa & Gym
- Accessibility features available

[Virtual Tour](#)

[Hotel Fact Sheet](#)

[Video](#)

The Fine Print

- Minimum 10 rooms per night
- New bookings only and subject to availability; blackout dates may apply
- Booking window 1st Jan 2026 until 31st Oct 2026
- Stay window 1st Jan 2026 to 31st December 2027
- Commission on final spend applicable to meeting space, accommodation & F&B only
- 10% Deposit on confirmation (reduced from 25%)
- Attrition – 2 rooms 48 hours prior to arrival
- Cancellation – 20% 30 days prior to arrival
- Rates are based on sole occupancy, may vary by arrival date and be limited to certain room types
- Suite upgrades can only be confirmed at the time of confirmation of the group.
- Offer is not applicable for previously contracted programmes

To book please email events.manchester@edwardian.com

The Edwardian Manchester

Free Trade Hall, Peter Street, Manchester

★★★★★

Owned and managed by Edwardian Hotels London

THE
EDWARDIAN
MANCHESTER

